

Booth & Banquette Collection



Booth Styles



Custom Design



Options



Interiors



WHAT MAKES US DIFFERENT

For the past 40 years, Ohio based Soft Touch Furniture has been a leader in the commercial furniture industry—a leader in durable, high quality commercial furniture with a strong reputation for affordable, quality, custom products, and excellent customer service.

We know that your project demands special attention. When you partner with Soft Touch Furniture, you receive expert knowledge, personal attention, and competitive pricing—a combination that sets us apart in the commercial furniture manufacturing industry. We are proud of our superior attention to detail and outstanding craftsmanship.

Our state of the art production facility, skilled craftsmen, and superior customer service allow our customers to enjoy creative design, world class quality, and direct from the manufacturer pricing.

Our team of dedicated craftsmen ensures each piece is produced to your exact specifications. From a single piece to a complete furniture package, we are your one-stop source for premium custom furniture.



WE ARE THE MANUFACTURER



Table of Contents

Booth Styles	4-29
Booth Shapes	30
Booth Heights	31
Seat Options	32
Finishing Touch	33
Back Options	34
Bases & Technology	35





Embassy Suites
Tuscaloosa, AL

Let Soft Touch Furniture help you create your vision for your space

At Soft Touch Furniture, we pride ourselves in making beautiful high-quality booths and banquettes. They have been thoughtfully engineered to be attractive, functional, and low maintenance.

There are a cornucopia of options, from heights, to styles, to finishes, so you can be assured of getting the exact look you desire, at the price point you want. We offer booths in every size and shape imaginable and on the off-chance we don't have what you are envisioning, we'll make it. It's that simple.



SOFT TOUCH
FURNITURE



Newark Airport
Newark, NJ



Fire Grill
Girard, OH



Possibilities

Our booth manufacturing capabilities are as limitless as your creative imagination. Anything you can think of we can design, whether it be a classic design like the Adams booth or something completely unique, we are up to the challenge.

Our catalog of booths is just a sampling of what we are capable of. If you don't see something you like, give us a call and we will work with you to get the design of your dreams.

Cafe 422
Boardman, OH

Booth Styles



Quality

Our booths are unique in every way but that doesn't stop us from having exceptional quality and craftsmanship. Each of our booths are checked and re-checked by quality assurance to make sure that they are top notch quality.

Also, our booths are CNC engineered for accuracy and are assembled by skilled craftsmen for the best possible quality.



ANDERSON

- Smooth back
- Maple wood top and side caps
- Enclosed kick base



ADAMS

- Fully upholstered
- Smooth back
- Enclosed kick base



BERLIN

- Welt back
- Maple wood top and side caps
- Enclosed kick base



BAILEY

- Fully upholstered
- 6" Head roll
- Enclosed kick base



UNIVERSITY

- V-back
- Upholstered top and side caps with coordinating welt
- Enclosed kick base



MINNESOTA

- Smooth back
- Oak wood top cap, side caps, and crumb wipe

Booth Styles



CRANE

- Smooth back
- Maple wood top and side caps
- Enclosed kick base
- Upholstered crumb wipe



DUKE

- Smooth back
- Maple wood top, and side caps
- Open base with contemporary legs



WILLY

- Fully upholstered
- Smooth back
- Open base with tapered legs



CAMPBELL

- Fully upholstered
- Vertical channel back
- Upholstered crumb wipe
- Enclosed kick base



HARVEST

- Decorative wood side cap
- Wood seat support
- Smooth back



HEX

- Fully upholstered
- Tufted back
- Enclosed kick base



ROOSEVELT

- Fully upholstered
- Fabric rolled over top and sides
- One piece wood seat support and kick base



ELEANOR

- Roll over top
- Wood side caps and seat support



SILVER

- Upholstered back with accent stripes and piping
- Wood top and side caps
- Enclosed kick base



SILVER

- Upholstered back with accent stripes and piping
- Wood top and side caps
- Shown double booth with glass divider



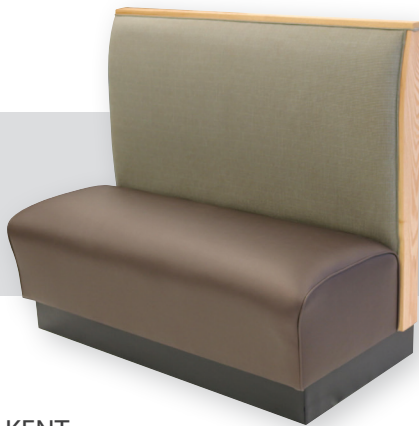
KENNEDY

- Drop front seat
- Wood top and side caps
- Back upholstered plain with decorative nails around edge



EAGLE

- Drop front seat
- Laminate top and side caps
- Smooth back



KENT

- Drop front seat
- Smooth back
- Oak wood top and side caps



STEVENS

- Upholstered back with accent stripes and piping
- Upholstered top and side caps



BOARDMAN

- Drop front seat
- Fully upholstered
- Fabric pulled over top and sides
- Low profile kick base



APOLLO

- Drop front seat
- Biscuit tufted back
- Enclosed kick base



PHOENIX

- Angled back cushion with black laminate above
- Wormy maple top and side caps
- Laminate seat support and kick base



LATIN

- Button tufted back
- Head-roll
- Fabric rolled over top and sides

Booth Styles



CLEARWATER

- Drop front seat
- Upholstered top and side caps
- Enclosed kick base



ROSA

- Fully upholstered
- Roll over top
- One piece oak wood seat support and kick base



SEATTLE

- Arched back
- Fully upholstered
- Upholstered crumb wipe
- Enclosed kick base



SEASONS

- Single square button
- Square metal legs



ROCHESTER

- Standard seat height (18")
- Maple wood top cap, side caps, and seat support
- 1 1/2" square metal legs



ROCHESTER

- Bar seat height (30")
- Maple wood top cap, side caps, and seat support
- 1 1/2" square metal legs
- Metal Foot Rest



GEORGIA

- Drop front seat
- Smooth back
- Maple wood top cap, side caps, and crumb wipe



DAKOTA

- Maple top cap, side caps, crumb wipe, and seat support
- 1 1/2" Square metal legs



PRESTON

- Maple wood top cap, side caps, and seat support
- Enclosed kick base



CHARLESTON

- Channel back
- Mahogany wood top cap, side caps, and crumb wipe
- Enclosed kick base



JAY

- Solid wood and wood veneer construction
- Hanging cushions
- Enclosed kick base



PRESTON

- Inside back with buttons
- Maple wood top cap, side caps, and seat support
- Enclosed kick base



ELDORADO

- Fully upholstered
- Button tufted back
- Wood frame



BIGHAM

- Upholstered seat
- Maple wood back and seat support
- Enclosed kick base



BIGHAM

- Upholstered seat and back pad
- Maple wood back and seat support
- Enclosed kick base



SALEM

- Solid wood frame with V-groove bead board back
- Oak wood species
- Upholstered seat and back rest



WILMINGTON

- Upholstered back pad
- Solid wood and wood veneer construction
- Enclosed kick base



MAINE

- Upholstered seat
- Maple wood back and seat support
- Enclosed kick base



Comfort Suites
North Bergen, NJ

Experience

Over the last 40 years, Soft Touch Furniture has produced some of the finest furnishings in the industry.

Our comprehensive experience across all manner of clients—from world-class hotels in New York City, to premier eateries in Los Angeles, to local family restaurants—gives us a unique insight into how best to take your vision from concept to completion.

Working together, we'll ensure you get exactly what you want.





The Dan Marino Foundation
Ft. Lauderdale, FL

Booth Styles



LENNY

- Laminate seat and sides with solid wood edging
- Upholstered back rest
- Enclosed kick base



MOBY

- Upholstered seat
- Solid wood maple slats



OREGON

- Removable upholstered seat
- Solid wood: Ponderosa Pine
- Wood runs vertical



BOARDWALK

- Pine wood slat back
- Removable upholstered seat



DOC

- Outdoor banquette
- Solid wood construction



NOODLES

- Wormy maple wood
- Removable upholstered seat



ROBINSON

- Mission style bench
- Solid Maple



CHARLIE

- Solid wood and wood veneer construction
- Inside back and seat: plank style bamboo



ROME

- Upholstered seat and back pad
- Solid wood and wood veneer construction
- Shown with power / USB charger



MONTANA

- Solid wood and wood veneer construction
- Open base



MONTANA

- Solid wood and wood veneer construction
- Upholstered seat and back pad
- Open base with wood legs



NILES

- Solid wood and wood veneer construction
- Upholstered seat
- Open base with wood legs

Booth Styles



FAIRFIELD

- Fully upholstered
- Button tufted back
- Wood legs



IRVINE

- Fully upholstered
- Smooth back
- Wood frame
- Accent railing



HOOVER

- Wing style high back
- Fully upholstered
- 2" Diameter steel leg



SYLVESTER

- Side chair
- Fully upholstered
- Biscuit tufted
- Contemporary style legs



FRAMINGHAM

- Mahogany wood arch, top cap, and side caps
- Tulip style wood legs



TOPEKA

- Sofa style
- Fully upholstered
- Contemporary style legs



TOPEKA

- Sofa style
- Fully upholstered
- Contemporary style legs



VINCENT

- Sofa style chair
- Fully upholstered
- Full wood frame



CARSON

- Sofa style
- Fully upholstered
- Tapered wood legs



LEO

- Fully upholstered
- Diamond tufted back
- Spiral fluted bun foot



PARSONS

- Curved back with button in center
- Round wood legs



HOMEWOOD

- Sectional sofa with throw pillows
- Open base
- Wood legs



ATLANTA

- Fully upholstered
- Wood seat support
- Tapered wood legs



ONTARIO

- 30" Seat height
- Fully upholstered
- 2" Square metal base



FAIRMOUNT

- Tufted back
- Walnut wood top and side caps
- 2" Round brushed steel legs



TORONTO

- 30" Seat height
- Wood side caps and legs
- Aluminum foot rest



LONDON

- Diamond tufted
- Marshall spring seat
- Decorative nails
- Bun feet



HOBOKEN

- Wing style
- Upholstery rolled over top
- Tapered wood legs



Succotash
National Harbor, MD



Covelli Center
Youngstown, OH

Booth Styles



CLEVELAND

- 30" Seat height
- Open base with contemporary legs
- Maple wood top and side caps



JERSEY

- Sofa style
- Fully upholstered
- Full wood frame
- Shown with upholstered arms
- Chair version



JERSEY

- Sofa style
- Fully upholstered
- Full wood frame
- Shown with upholstered arms



DUCHESS

- Smooth back
- Maple wood top cap, side caps, and crumb wipe
- Open base with contemporary legs



TEXAS

- 30" Seat height with pillows
- Foot rest
- Open base with tapered legs



SARGENT

- Solid wood side cap and seat support
- Open base



The Melting Pot
Maple Shade, NJ



Bad Daddy's Burgers and Fries
Winston Salem, NC



OSCAR

- Curved banquette
- Metal frame
- Bent plywood privacy screen



BELMONT

- Curved banquette
- Metal frame
- Center accent panel on back



NEWARK

- Brushed stainless steel top cap, side caps, and kick base
- Laminate with upholstered back



GEORGETOWN

- 30" Seat height
- Teak wood slats
- Upholstered back cushions
- 2" Square metal base



GEORGETOWN

- 18" seat height
- Upholstered back
- 2" square metal base



FRANKLIN

- Lobby half round banquette
- Solid wood top
- Tapered wood legs





The Godfrey Hotel
Chicago, IL



Global

At Soft Touch Furniture, we are not limited by geography. From our Ohio manufacturing facility, we reach the corners of the Earth—from all across the USA to Europe and Saudi Arabia, we have no boundaries. Plus, we can deliver on our own company trucks, and can install as well.

So we're there from beginning to end—initial concept, design, build, delivery, and installation. Thus, you can count on Soft Touch's quality every step of the way.

Louis Joliet Mall
Louis Joliet, IL



Booth Styles



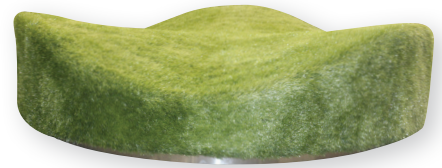
LOUIS

- Waiting bench
- Padded seat
- Power outlets
- Brushed stainless steel kick base



JOLIET

- Upholstered back and seat
- Wood seat support
- Brushed stainless steel kick base



PLAYSCAPE LOUNGER

- Padded and covered with synthetic grass
- Brushed stainless steel kick base



MANHATTAN

- Side chair
- Tapered wood legs



SOHO

- Fully upholstered
- Center button
- Tapered wood legs



GARLAND

- Square ottoman
- Fully upholstered
- Stainless steel base



GARLAND

- Round ottoman
- Fully upholstered
- Stainless steel base



IDAHO

- Corner bench
- Fully upholstered
- Tapered wood legs



JAMESTOWN

- Kidney shaped front
- Inside back: smooth with buttons
- Wood legs



PARKLAND

- Fully upholstered
- Double sided
- Kidney shaped seat
- Wood legs



VINELAND

- Square ottoman
- Fully upholstered
- Square wood legs



JEFFERSON

- Round ottoman
- Fully upholstered
- Tapered wood legs



ASHLAND

- Round ottoman
- Fully upholstered



VINELAND

- Square ottoman
- Fully upholstered
- Round bun style leg

Booth Styles



CENTURY

- Waiting bench
- Contoured foam seat
- Wood seat support



ROCKET

- Waiting bench
- Upholstered seat
- Wood seat support
- Enclosed kick base



EDGEWATER

- Waiting bench
- Contoured foam seat
- Wood seat support
- Enclosed kick base



WASHINGTON

- Waiting bench
- Padded removable seat
- Enclosed kick base



ASHLAND

- Rectangular ottoman
- Fully upholstered
- Metal legs



LINCOLN

- Ottoman
- V-style upholstery
- Metal legs with satin chrome finish



WINFIELD

- Waiting bench
- Button tufted top
- Wood seat support with tapered legs



UTAH

- Kidney shaped ottoman
- Fully upholstered
- Maple wood frame with tapered legs



IRELAND

- Ottoman
- Fully upholstered
- Tapered sides



JOURNEY

- Ottoman
- Fully upholstered
- Maple wood frame



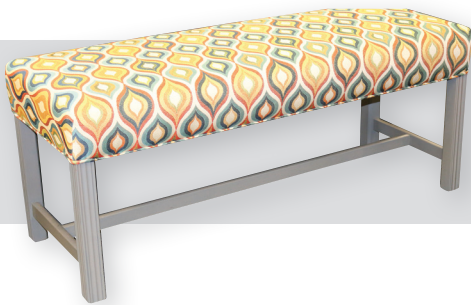
NEWTON

- Waiting bench
- Fully upholstered
- 2" Diameter steel leg



SOUTHWEST

- Waiting bench
- Wood seat support
- 2" Diameter steel leg



ELTON

- Bench
- Solid wood frame
- Fluted legs



CABIN

- Bench
- Solid wood frame
- Wood species: Ash



ROCKPORT

- Slatted bench
- Wood species: Teak
- Clear coat finish



PACIFIC

- Bench
- Distressed oak top
- Curved powder coated metal legs



HOUSTON

- Inside back—individual upholstered panels
- Wood seat support



PRESTON

- Wall Banquette
- Maple wood top cap, side caps, and seat support
- Enclosed kick base

Booth Styles



ARIZONA

- Three quarter corner unit
- Fully upholstered



CRANE

- Three quarter corner unit
- Fully upholstered
- Wood outside backs



ARIZONA

- Half corner unit
- Fully upholstered



BIGHAM

- Half corner unit with attachable single units
- Upholstered seat
- Maple back and seat support



GODFREY

- U-shape banquette
- Fully upholstered



SILVER

- Upholstered back
- Wood top cap, side caps, and outside backs
- Enclosed kick base



VIRGIN ATLANTIC

- Ball sofa
- Custom circular booth
- Individual upholstered foam balls



O'HARE

- Quartz tops on swivels
- Chrome arm rests
- Electrical outlets
- Open base with chrome legs



OXFORD

- Sofa
- Fully upholstered with pillows



ALABAMA

- Rectangular sofa
- Fully upholstered
- Open base—Tapered wood legs



HOLIDAY

- Upholstered seating
- Laminated side tables with electrical outlets and data modules



HOLIDAY

- Fully upholstered
- Custom angle to fit space



Virgin Atlantic Clubhouse
JFK Airport, NY



WINSTON

- Fully upholstered
- Enclosed kick base



CHAMBERS

- Sofa style
- Fully upholstered
- Tapered wood legs



MILLENNIUM

- Sofa style
- Diamond tufted back
- Wood legs



CHICAGO

- 30" Seat height
- Diamond tufted back
- 2" Round foot rest: powder coated black



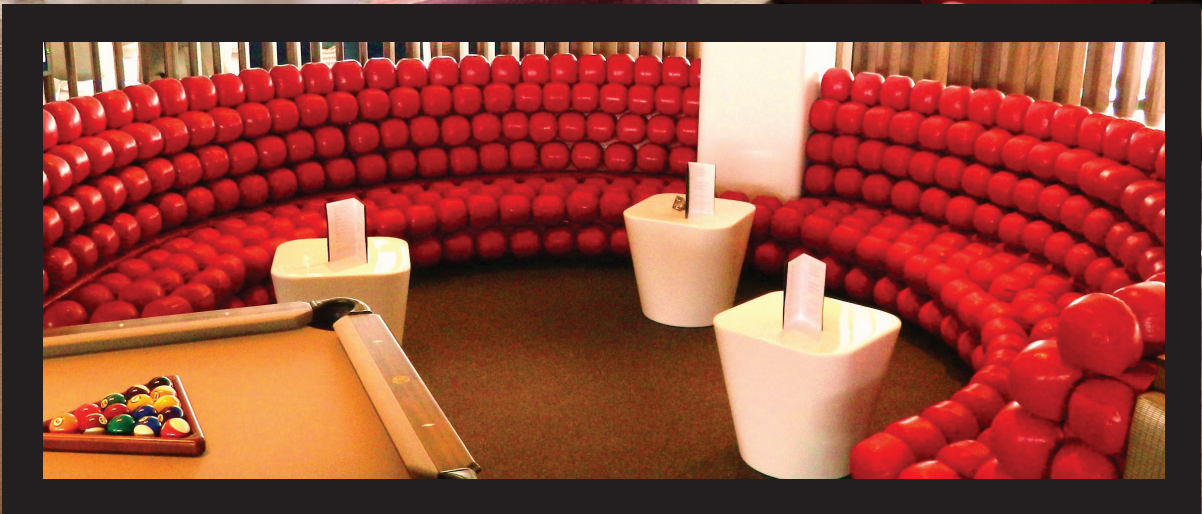
CHICAGO

- Half circle unit
- Diamond tufted back
- Enclosed kick base with applied wood legs on front



STUDIO

- Biscuit tufted inside back
- Fully upholstered outside back
- Wood seat support



SAMUEL

- Fully upholstered
- Diamond tufted back
- Open base, wood seat support and legs



JOE

- Fully upholstered
- Tufted back
- Open base, wood seat support and legs



JOE

- 30" Seat height
- Fully upholstered
- Open base, wood seat support and legs



EMERALD

- Fully upholstered
- Double horizontal channels
- Lower lumbar support
- Drop front seat



EMBASSY

- Double horizontal channels
- Lower lumbar support
- Enclosed kick base



DUBLIN

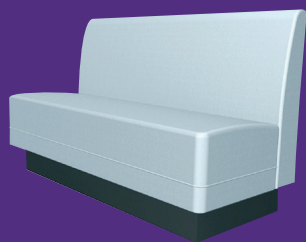
- Fully upholstered
- Wood seat support with tapered legs

Booth Shapes

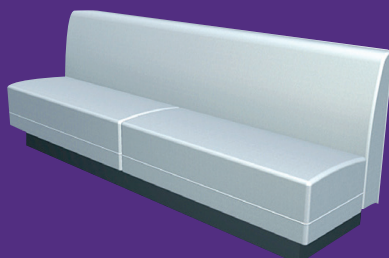
We offer every booth shape imaginable, from classic diner to futuristic round rotundas. So whether you envision a casual appearance or something really contemporary, we've got the look for you. As always, we'll create custom work as needed, so if you have a column running down the wall, we'll not only incorporate it, but we'll make it look like it's an important part of the decor. Your space is not a limitation to us.

Things to take note of in your space when deciding which booth shapes you want to use :

- Location of all windows and doors
- Tight corners or small spaces
- Angled or curved walls
- Columns
- Long lengths of wall
- Any accessibility issues



SINGLE



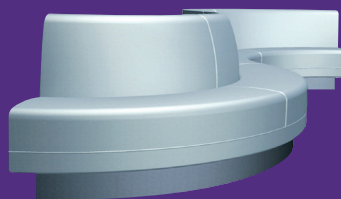
STRAIGHT



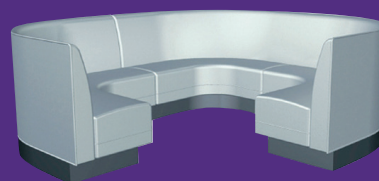
DOUBLE



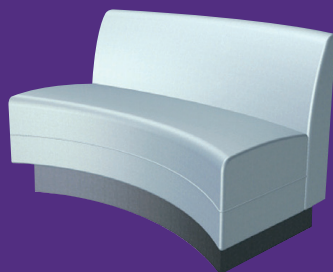
ROTUNDA



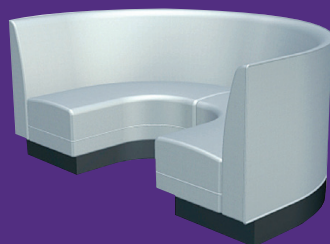
CUSTOM CURVE



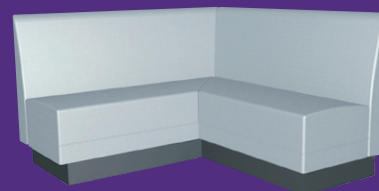
3 QUARTER



ELLIPSE



U-SHAPE



L-SHAPE

Booth Heights

There are several different height options for tables, chairs, and booths.

The height of furniture greatly effects the feel of your establishment. There are conditions to keep in mind when choosing the height of your furniture:

What atmosphere do you want to have (casual vs. formal)? Are there any regulations that you need to be aware of? Are there any architectural features of your space which may help determine the size of your furniture (lower ceiling, etc.)? Once you answer these questions, choosing the size of your furniture should be easy.

DIFFERENT HEIGHT CHOICES

Standard Height:

This is typically a table height of 28" to 30" and a seat height of 18"-19". It is the most common height in restaurants. Not only do most people find this height very comfortable, it is also the only height that complies with ADA regulations.

Counter Height:

This is typically a table height of 34" to 36" and a seat height of 26". They are typically more casual and make it easier to talk with people who may be standing. They can work well in small areas because they give the illusion that they take up less space.

Bar Height:

This is typically a table height of 40" to 42" and a seat height of 30". This taller, thinner height is very good for small spaces and perfect for "bar area" tables. They have the same advantages as counter height furniture but even more so, because the difference between standing and sitting is so minimal, they create an extremely casual and "fun" atmosphere.



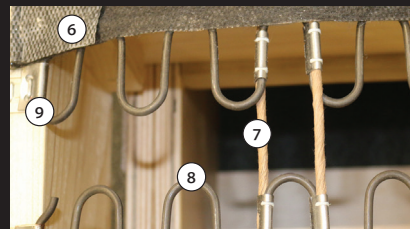
Seat Options

At Soft Touch Furniture, you not only have many aesthetic options, but you also have choices in how the furniture functions.

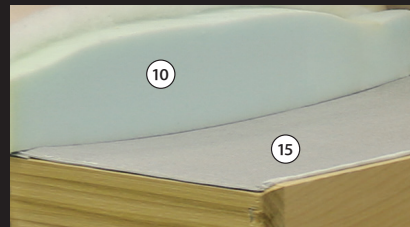
The spring seat decking option offers the most comfort and the highest build quality available. Springs provide a more dynamic reflex than solid platform decks. The springs are fastened to each other ensuring they all work together to spread the pressure out more evenly.

Webb seat decking has a base topped with a 100% woven polyester webbing material and the platform seat decking has a solid base. Both bases are covered with a layer of high density foam contoured for ergonomic design.

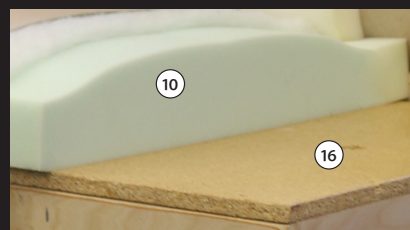
All three seat options are very similar in comfort, so much so that we even have a hard time telling the difference. The platform seat and webb seat are more cost-effective options, so someone with a smaller budget can still get exceptional comfort.



Spring seat decking



Webb seat decking



Platform seat decking

Seat Features and Options:

1. Upholstered or wood top and side caps
2. CNC engineered frame for consistency
3. Back cushion is 1 1/2" thick high density foam
4. 100 Point V-board
5. Polyester fiber top is used for additional initial softness and cover stability
6. 7.2 oz Sag-less burlap tops the spring assembly for additional support
7. 16 Gauge steel stabilizer oil tempered wire
8. Tempered steel sinuous wire (no sag) springs
9. Springs attached to frame with fully lined clips to eliminate noise
10. Premium high density seat foam
11. 5/8" high density flex pad, creates an even platform
12. Removable seat frames are assembled using screws, glue, & corner blocks
13. Seat support can be upholstered, laminate, or wood
14. Enclosed poly vinyl kick base or optional leg styles
15. Webbing is comprised of 100% woven polyester which allows for design flexibility
16. Platform seat decking is made from premium industrial grade particle board



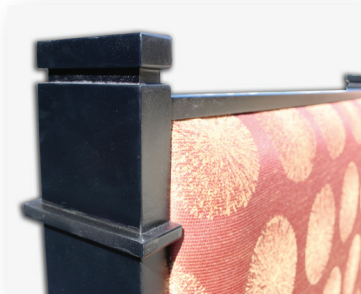
The Finishing Touch

At Soft Touch Furniture, every customer's project is manufactured to match their site specifications and unique design. To meet specific applications, styles, and price points the following attributes can be customized:

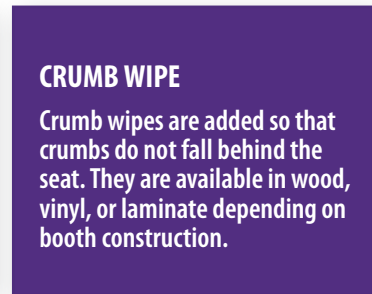
- Booth shape and length
- Seat depth (standard 18")
- Back height (standard 36")
- Back pitch
- Materials (upholstered or wooden)
- Upholstery styles and tufting
- Wood species and finishes
- LEED compliant materials available



Upholstered top cap



Decorative side cap



CRUMB WIPE

Crumb wipes are added so that crumbs do not fall behind the seat. They are available in wood, vinyl, or laminate depending on booth construction.

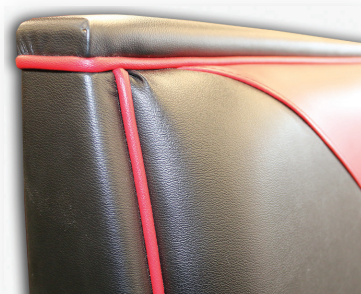
Crumb wipe



TOP CAP

Top caps are the separate finished pieces at the top of booths. They can be solid wood, upholstered or not used at all.

Top cap



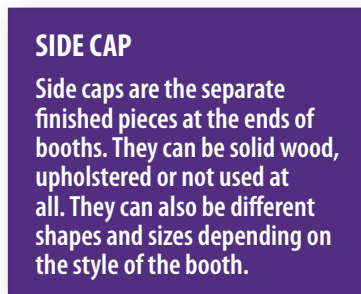
Upholstered side cap



Upholstered crumb wipe



Roll over top



SIDE CAP

Side caps are the separate finished pieces at the ends of booths. They can be solid wood, upholstered or not used at all. They can also be different shapes and sizes depending on the style of the booth.

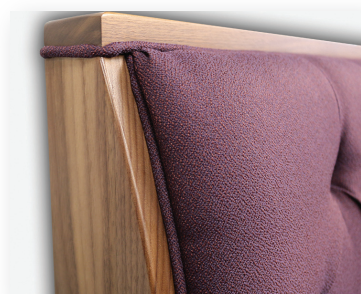
Side cap



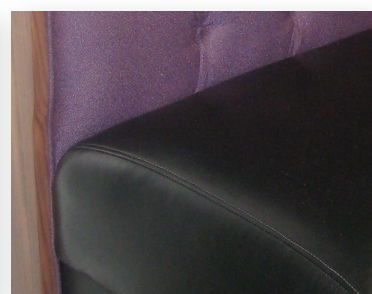
Wood crumb wipe



Wood top cap



Wood side cap

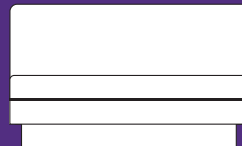


No crumb wipe

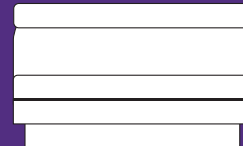
Back Options

Here's the neat thing with booth backs—by changing the back, you can go from classic, to modern, to anything in between. We have back options galore, which guarantees we'll satisfy whatever look or feel you are visualizing.

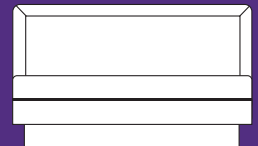
Take a peek at our wide array of styles, textures, and patterns, and envision them in your space. And if you need help choosing, or want something unique, our expert designers are a quick call away.



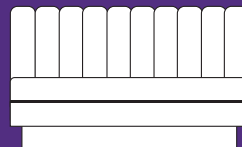
Plain (Standard)



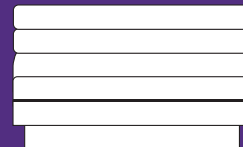
Plain back and wide (3"-6") head roll



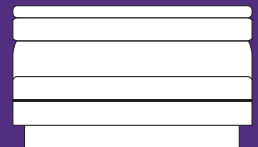
Plain back and 3" frame head roll



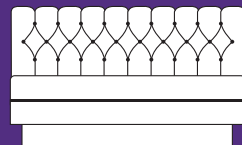
Wide vertical channels (3"-6")



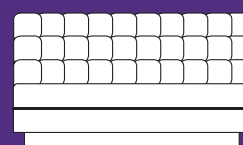
Wide horizontal channels



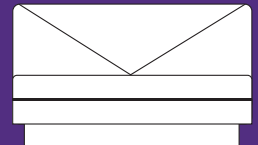
Graduated width Horizontal channels



Diamond tufted



Biscuit tufted



V-Back

OUTSIDE BACK OPTIONS

There are three different outside back options. An unfinished back is where the back is covered with a heavyweight 100 point v-board panel and is not meant to be seen.

A wood outside back is finished with wood and is usually stained to match the rest of the booth.

An upholstered outside back is where the back of the booth is finished with upholstery, which usually matches the rest of the upholstery on the booth.



Unfinished Back



Wood Finished Back



Upholstered Back

Bases, Legs & Technology

How your booth is finished influences its visual impact. Does it sit on a solid base, or are there legs with space underneath? There are two types of booth bases: A kick base which is an enclosed base that can be finished with solid wood, vinyl, or carpet, or an open base supported with legs (see below for leg options). Either is viable—it's more a matter of preference.

We live in an incredibly technological society today—computers, smart phones, Wi-Fi, etc. That can include your furniture, too. From furniture with USB ports to electrical outlets to specialty lighting to almost anything imaginable, we can create exactly what you need, and really “wow” your customers.

The options are numerous, so if you have a specialty lighting and/or technology need, just mention it, we can integrate it into your design. We have expert designers on staff, and will work with you to obtain the lighting and/or technology that works best.



Power Data Station and Combination USB Charger

The combination usb charger and duplex outlets allow someone to either charge a device with a usb port or use a typical duplex plug. It also is tamper resistant and is compatible with most electronic devices.



6501 Metal leg

- 1 1/2" square
- 6" High
- Finish: Powder coat



6510 Tapered metal leg

- 7" High
- Finish: Brite Chrome



6515 Tubular leg

- Stainless steel
- 1 5/8" diameter
- 1 3/4" adjustable



6520 Round leg

- 2" Diameter Stainless steel
- 6" Height
- Round foot with non-marking plastic glide
- Foot adjusts up to 2"



Round leg

- Any size available



Bun leg

- Any size available



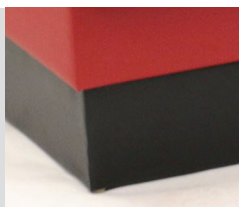
Bun leg

- Any size available



Tapered leg

- Any size available



Black poly vinyl kick base

- Other colors available



Combination USB charger

- Two USB ports
- 3.6A Charging capacity
- Smart chip
- Two Charging ports
- 15A Taper resistant safety outlets



Recess mounted light

- Enhances display cabinets and shelves
- Surface or recess mounted
- Different shapes, sizes and finishes



Stainless steel kick base

- Available in: satin, brushed, or polished



For additional information on our booths, banquettes, and interiors including: installation, quotes, warranty, and pricing give us a call. We'll be glad to help—877.747.7638.

A Final Word

We hope you've found this brochure informative, and that it's given you an insight on not just our products, but the way we conduct business as well. In this hustle-bustle change-a-minute world, it's reassuring to find a company that delivers what it promises, and does so with a personal touch that seems to be a lost art today.

When you call us, you talk to real people who are focused on meeting your restaurant and hospitality furniture needs. Whether you own one establishment or are the buyer for a large chain, you can expect nothing less than our full attention and, most importantly, our very best work. Oh, and the cherry on top is we'll do it at a price that you'll love. High quality, American-made beauty does not have to break the bank. Yes, you can have it all. Get in touch with us today and prepare to be pleasantly surprised.

Soft Touch Furniture

1560 South State Street
Girard, OH 44420 USA

softtouchfurniture.com

Phone: 877.747.7638 | 330.545.4204

Fax: 330.288.0083

Email: info@softtouchfurniture.com



Alex's Lemonade Stand

At Soft Touch Furniture we also believe in giving back to the community. We contribute to several charities including Alex's Lemonade Stand. For more information on contributing to Alex's Lemonade stand go to www.alexlemonade.org.

Interested in other aspects of Soft Touch Furniture? See our other brochures



Table Tops & Bases



Millwork



Interiors



Chairs