



SOFT TOUCH
FURNITURE

Booths, Banquettes, Benches



Photo: Soft Touch Furniture



Virgin Atlantic Sofa



Photo: Slade Architecture



Virgin Atlantic Sofa



- Printed wood outside back
- Foam back and seat cushions
- Stainless steel kickbase
- Stainless steel edge protector



Joliet Booth



Photo: Scott Touch Furniture



Joliet Booth



- Built to client's specifications
- Made to fit around a large support column
- Metal tubular legs
- Chrome armrests
- Built-in movable quartz tables
- Built-in electrical outlets



Rotunda Banquette

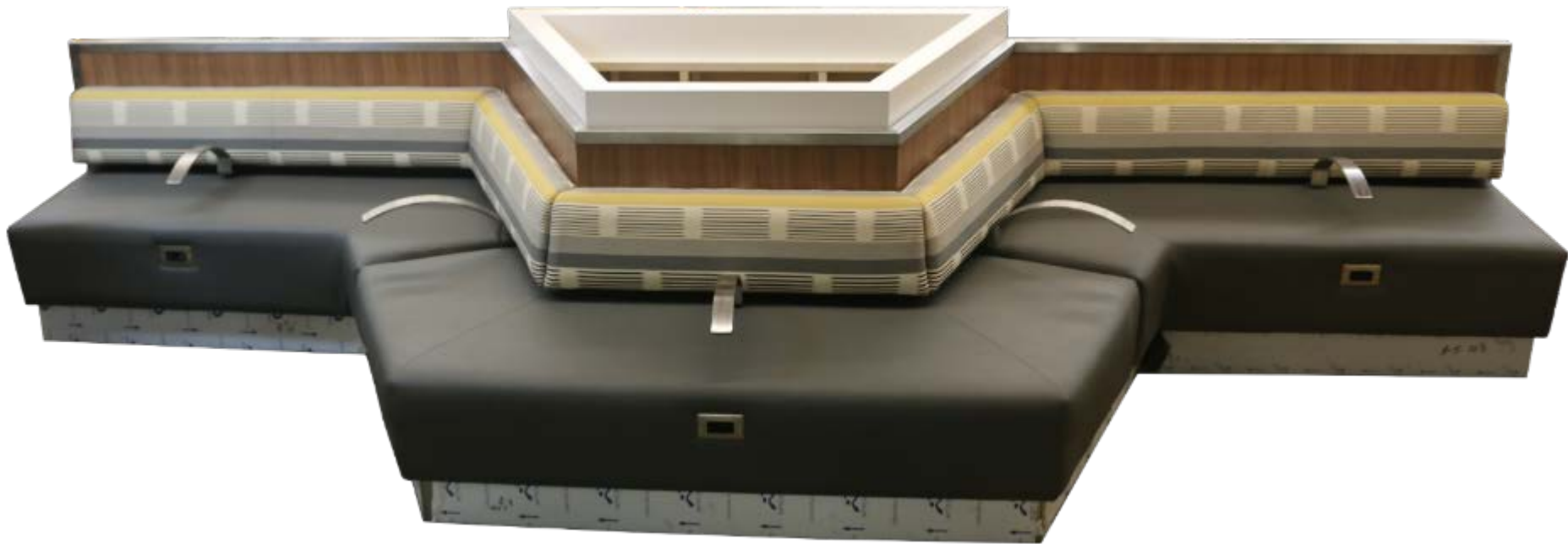


- Laminate: Formica Oiled Legno
- 1½" stainless steel trim on back and side edges
- Back upholstery: Designtex Porte, Bluebird
- Seat upholstery: Knoll Prairie, Riverbed
- Stainless steel kickbase



Newark Banquette

- Laminate: Formica Oiled Legno
- 1½" stainless steel trim on back and side edges
- Back upholstery: Knoll Ikat Stripe, Lemon Drop
- Seat upholstery: Knoll Prairie, Riverbed
- Stainless steel kickbase
- Stainless steel armrests
- Built-in combination electrical/USB outlets
- Laminate planter



Newark Banquette with Planter





Newark Banquette



- Diamond-tufted inside back
- Upholstery: Charlotte Select Recycled Leather, Port
- Upholstered top cap, end caps, and seat support
- Decorative nailhead trim
- Recessed kickbase wrapped with black polyvinyl



Sinatra Booth



Photo: Soft Touch Furniture



Sinatra Booth | Mixed-Species Tabletops



- Vertical channel tufting on inside back
- Upholstery: Charlotte Select Recycled Leather, Port
- Upholstered top cap, end caps, and seat support
- Recessed kickbase wrapped with black polyvinyl



Campbell Booth



- Vertical channel tufting on inside back
- Upholstery: Charlotte Select Recycled Leather, Port
- Upholstered top cap, end caps, and seat support
- Recessed kickbase wrapped with black polyvinyl



Campbell Booth



Photo: Succotash, <http://succotashrestaurant.com/>



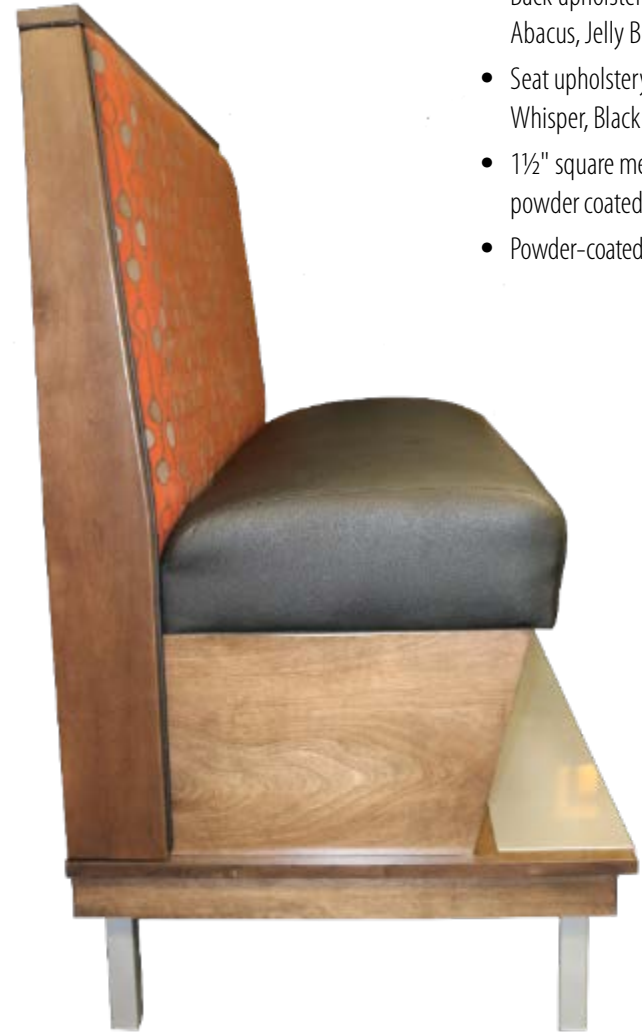
Campbell Booths | Mixed-Species Tabletops

- Diamond button tufting on seat
- Upholstery: Charlotte Select Recycled Leather, Port
- Upholstered seat support
- Recessed kickbase wrapped with black polyvinyl



Waiting Bench





- Maple top cap, side caps, and seat support
- High-density foam seat
- Back upholstery: Knoll Abacus, Jelly Bean
- Seat upholstery: Spradling Whisper, Black
- 1½" square metal legs with powder coated finish
- Powder-coated steel step plate



Rochester Booth, Bar-Height



- Maple top cap, side caps, and seat support
- High-density foam seat
- Back upholstery: Knoll Abacus, Jelly Bean
- Seat upholstery: Spradling Whisper, Black
- 1½" square metal legs with powder coated finish



Rochester Booth



Photo: Yelp Reviewer Jodie S., www.yelp.com/biz_photos/bad-daddy-burger-bar-knoxville-knoxville-2



Rochester Booth



- Maple top cap, side caps, and seat support
- High-density foam seat
- Back upholstery: Knoll Abacus, Marbles
- Seat upholstery: Spradling Whisper, Black
- 1½" square metal legs with silver powder coat finish



Rochester Booth



- High-back, wing-style booth
- Upholstered seat support
- 2" tubular metal legs



Hoover Booth

- Upholstered seat support
- 2" tubular metal legs



Newton Bench



- Solid wood and wood veneer construction
- Wormy maple top cap, side caps, seat support, and finished outside back
- Stain color: M.L Campbell Coffee Bean
- Removable sprung seat
- Upholstery: Culp Recycled Leather, Quarry
- Kick base wrapped with black polyvinyl



Bigham Booth, Single



- Solid wood and wood veneer construction
- Wormy maple top cap, side caps, seat support, and finished outside back
- Stain color: M.L. Campbell Coffee Bean
- Removable sprung seat
- Upholstery: Culp Recycled Leather, Quarry
- Kick base wrapped with black polyvinyl



Bigham Booth, Double



Photo: Salt Touch Furniture



Bigham Booth



- Solid wood and wood veneer construction
- Wormy maple top cap, side caps, seat support, and finished outside back
- Stain color: M.L Campbell Coffee Bean
- Removable sprung seat
- Upholstery: Culp Recycled Leather, Quarry
- Kick base wrapped with black polyvinyl



Bigham Booth, Single



- Solid wood and wood veneer construction
- Wormy maple seat support
- Stain color: M.L Campbell Coffee Bean
- Removable sprung seat
- Upholstery: Culp Recycled Leather, Quarry
- Diamond-tufted backpad
- Kick base wrapped with black polyvinyl



Edgewater Bench with Separate Hanging Backpad





Photo: Soft Touch Furniture



Edgewater Bench with Hanging Backpad



Photo: Soft Touch Furniture



Edgewater Bench with Hanging Backpad

- Pine construction
- Stain color: Harbor Mist
- Slat back with black insert panel
- Removable seat
- Seat upholstery: Culp Cantina, Quarry



Boardwalk Booth



- Maple top cap, side caps, seat support, and legs
- Stain color: Harbor Mist
- Removable seat
- Seat upholstery: Culp Cantina, Quarry



Duke Booth



- Oak divider and kickbase
- Upholstery rolled over top and sides
- Drop-front seat
- Back upholstery: Momentum Textiles Theta, Depth
- Seat upholstery: Culp Cantina, Quarry



Boardman Double Booth



Photo: Soft Touch Furniture



Boardman Double Booth

- Oak kickbase
- Upholstery rolled over top and sides
- Drop-front seat
- Back upholstery: Momentum Textiles Theta, Depth
- Seat upholstery: Culp Cantina, Quarry



Photo: Safi Touch Furniture



Boardman Curved Banquette



- Solid wood and wood veneer construction
- Ash top cap, side caps, and seat support
- Stain: Black aniline finish
- Inside back and seat: Bamboo flooring
- Removable accent pillows
- Pillow upholstery: Carnegie Pebble



Charlie Banquette



Photo: Kizuna Sushi and Ramen, <http://kizunarysons.com>





- Upholstery rolled over top and sides
- Back Upholstery: Carnegie Pebble
- Seat Upholstery: Designtex, Essence, Candy Apple
- Ash trim and kickbase
- Stain: Black aniline finish



Booth

- Solid ash and wood veneer construction
- Stain: Black aniline finish



Ash Booth



Photo: Kizuna Sushi and Ramen, <http://kizuna-sushy.com>



Ash Booth



- Maple top cap and side caps
- Removable back pad with sewn biscuit tufting
- Drop-front removable seat
- Upholstery: Culp Cantina, Quarry
- Kickbase wrapped with black polyvinyl



Apollo Booth



Photo: Google+ user Mandeep Singh, <https://tinyurl.com/y89kcoz9>



Apollo Booth



- Fully upholstered
- Finished outside back and sides
- Upholstery: Culp Recycled Leather, Magnetite
- Maple legs
- Stain color: Tobacco



Jersey Booth and Chair

- 34" diameter × 18" height
- Upholstery: Culp Recycled Leather, Dove
- Maple legs
- Stain color: Tobacco



Jefferson Ottoman





- Upholstery: Culp Recycled Leather, Dove
- Kickbase covered with black polyvinyl



Serpentine Bench



- Maple top cap, side caps, crumb wipe, seat support, and outside back
- Back pad
- Inside back upholstery: Arc Com Leonardo, Paprika
- Seat upholstery: Maharam Lariat, Mahogany
- Kickbase wrapped with black polyvinyl



Preston Booth



- Inside back upholstered in 6" wide strips
- Back upholstery: Symphony Vintage, Port; Symphony Vintage, Toffee
- Seat upholstery: Symphony Vintage, Toffee
- Wood seat support with tapered wood legs



Dublin Booth



- Inside back made of 8" round high-density foam bolsters
- Smooth, fully upholstered outside back
- Drop front seat
- Upholstery: Arc-Com Kirigami, Taupe



Emerald Booth



- Inside back: head roll
- Head roll (top bolster) upholstery: Valley Forge Marais, Grass; Mayer Fabrics, Webscape, Moss
- Seat and seat support upholstery: Mayer Fabric Chocolate, Key Largo
- Kickbase wrapped with black poly vinyl



Embassy Booth



- 6" vertical channel tufting on inside back
- Inside back upholstery: Momentum Textiles Flection, Tango
- Seat and seat support upholstery: Mayer Fabric Jekyll & Hyde, Nuff
- Kickbase wrapped with black polyvinyl



Campbell Booth



Photo: Embassy Suites, <https://myurl.com/Ka...>



Campbell Booth

- Fully upholstered
- Open base with tapered wood legs
- Coordinating accent pillows



Alabama Sofa



Photo: Bounds and Gillespie Architects www.wbgarchitects.com/project/embassy-suites



Alabama Sofa

- Fully upholstered
- Upholstery: HBF Textiles Crew Cut, Grenadine
- Maple legs



Vineland Ottoman





- Bar-height (30" seat height)
- Wood side caps and base
- Upholstery: Spradling Patriot Plus, Peacock
- Aluminum footrail



Toronto Booth, Bar-Height



- Solid oak and wood veneer construction
- Stain color: Malt Brown



Montana Booth

- Wood top cap, side caps, and seat support
- Stain color: Minwax Provincial
- Button-tufted inside back
- Upholstery: Culp Cantina, Quarry
- Kickbase wrapped with black polyvinyl



U-Shaped Booth



- Corner unit
- Solid wood and wood veneer construction
- Wood species: Ponderosa pine
- Stain color: Colony Maple, thinned
- Removable seat
- Upholstery: Culp Cantina, Black
- Black vinyl decking
- Kick base: black poly vinyl



Oregon Booth

- ¾ Corner unit
- Fully upholstered
- Inside back and decking upholstery: Douglass TV Land, Slate
- Seat upholstery: Greenhouse Newport, Midnight
- Kickbase wrapped with black polyvinyl



Arizona Booth



- Built-in laminate side table
- Upholstery: Stinson Thicket, Sour Cherry
- Built-in electrical outlet and data modules



Holiday Sofa

- Built-in laminate side tables
- Upholstery: Stinson Thicket, Sour Cherry
- Built-in electrical outlet and data modules



Holiday Sofa



Photo: Holiday Inn www.holidayinn.com/gallery.php



Holiday Sofas



- Upholstered top and side caps with coordinating welt
- "V" pattern on inside back
- "V" and welt upholstery: American Beauty
- Top cap, side caps, seat, and seat support upholstery: Endurex Black





Photo: Soft Touch Furniture





- Inside back biscuit tufted with round buttons, wrapped over top
- Fully upholstered outside back
- Sapele veneer seat support
- Stain color: Natural
- Removable spring seat
- Back upholstery: Wolf Gordon Harbor, Deep Blue
- Seat upholstery: Mayer Maverick, Sapphire
- Kickbase wrapped with black polyvinyl



Studio Booth



Photo: Islander Resort, <http://guyhawneyourpostIslamorada.com/gallery/oceanside-williams-gallery/>



Studio Booth



- Sapele top cap and seat support
- Stain color: Natural
- Removable spring seat
- Back upholstery: Wolf Gordon Harbor, Deep Blue
- Seat upholstery: Mayer Maverick, Sapphire
- Kickbase wrapped with black polyvinyl



Houston Banquette



Houston Banquette



- Fully upholstered
- Back upholstery: Momentum Felix, Rouge
- Seat upholstery: Naugahyde Spirit Millennium, Imperial Blue
- One-piece seat support and kickbase
- Stain color: Mohawk, Black



Roosevelt Booth



- Fully upholstered
- Back upholstered with horizontal channels
- Removable sprung seat
- Upholstered seat support
- Kickbase wrapped with black polyvinyl



Winston Booth



- Fully upholstered back with wood frame
- Wood species: Oak
- Stain color: M.L. Campbell, Coffee Bean
- Upholstery: United Lush, Fireball
- 1 1/2" diameter metal accent rail and brackets



Irvine Booth



- Fully upholstered back with wood frame
- Wood species: Oak
- Stain color: M.L. Campbell, Coffee Bean
- Upholstery: United Lush, Fireball
- 1½" diameter metal accent rail and brackets





Photo: Brightest Young Things, <https://brightestyoungthings.com/article/first-look-mango-tree>



Irvine Booth | Red Oak Tables



- Fully upholstered with wood surround
- Wood Species: Oak
- Stain Color: M.L. Campbell, Coffee Bean
- Biscuit button-tufted inside back
- Upholstery: United Lush, Moonshadow
- Wood kickbase



Fairfield Booth with Wood Surround

Mango Tree, Washington, D.C.



Photo: Mango Tree, www.yelp.com/biz_photos/mango-tree-washington



Fairfield Booth



- Fully upholstered
- Biscuit button-tufted inside back
- Upholstery: United Lush, Moonshadow
- Wood legs
- Stain Color: M.L. Campbell, Coffee Bean



Fairfield Booth



- Fully upholstered with wood frame
- Wood Species: Oak
- Stain Color: M.L. Campbell, Coffee Bean
- Biscuit button-tufted inside back
- Seat upholstery: Culp Castillo, Honeydew
- Back upholstery: United Lush, Dragon



Eldorado Booth

- Teak slats
- Clear coat finish



Rockport Bench





- Maple top cap, side caps, and seat support
- Split back cushion; smooth upholstery with two buttons per cushion
- Removable seat
- Inside back upholstery: Arc Com Mystique, Amethyst
- Seat upholstery: Brisa, Bark 3914
- Kick base: black poly vinyl



Preston Booth



- Wood top cap, side caps, and kickbase
- “V” pattern on inside back
- Inside back upholstery: Stinson Lava, Stratum; Stinson Laredo, tan
- Seat upholstery: Stinson Laredo, Copen





- Fully upholstered
- Smooth inside back with decorative buttons
- Upholstery: Luxury Silvertex, Raspberry; Culp Cantina, Putty
- Finished outside backs
- Maple tapered legs



Jersey Booth, Two Sizes



- Solid wood and wood veneer construction
- Removable seat
- Upholstery: Greenhouse Flair, Malachite
- Kickbase wrapped with black polyvinyl



Edgewater Bench





- Smooth inside back with decorative button
- Upholstery: Greenhouse Vitality, Park
- Upholstered arms
- Finished outside back
- High-density foam seat
- Maple tapered legs



Jersey Chair with Arms



- Fully upholstered
- Diamond-tufted inside back
- One-piece seat and seat support
- High-density contoured foam seat
- Inside back upholstery: Douglass Pasadena, Crest
- Seat upholstery: Culp Cantina, Dove
- Oak legs



Millennium Banquette



Millennium Banquette



- "V" pattern on inside back
- Inside back upholstery: Spirit Millennium, Adobe white
- Top cap, side caps, inside back, and seat upholstery: Spirit Millennium, American Beauty
- Kickbase wrapped with black polyvinyl





- Solid wood and wood veneer construction
- Wormy maple legs, apron, top cap side caps, and inside and outside back
- Stain color: Natural
- 2" thick high-density foam seat
- Upholstery: Cantina Recycled Leather, Cocoa



Noodles Booth



Noodles Booth | Custom Stools | Custom Ceiling Grid | Laminate Tabletops



- Button-tufted inside back, fully upholstered with fabric wrapped over top and sides
- Removable seat
- Inside back upholstery:
 - Yellow: Architex Stripe It Rich, Gilt
 - Purple: Robert Allen Exquisite, Rare Orchid
 - Striped: Arc Com Zipline, Spring
- Seat upholstery:
 - Brown: Architex Florida, Hot Sauce
 - Purple: Architex Viper, Queen
- Wood legs



Fairfield Booth, Various Upholsteries



- 6' round × 4' high
- Solid wood top cap
- High-density, 3" thick contoured foam seat
- Inside Back Upholstery: Spradling Invision, Caramel
- Seat Upholstery: Spradling Killkenny, Sisal
- Tapered wood legs



Franklin Half-Round Rotunda Banquette



Photos: Quality Inn, <https://inquiri.com/keh6omo>



Franklin Half-Round Rotunda Banquette



- Mission style
- Solid maple construction
- Stain color: Cherry



Robinson Bench



- Top, side caps, seat supports all exposed edges laminate
- Laminate: Laminart Velvetex, Linear Wood
- Inside backs: 3" foam box cushion, diamond tufted
- Seat: 3" upholstered, foam box cushion
- Upholstery: Kirby Design Chester, Sangria



Diamond-Tufted Half-Circle Banquette



Photo: Band Construction, <http://bandcc.com/experience/restaurant/scarlet-oak/>



Half-Circle Banquette



- Top, side caps, seat supports all exposed edges laminate
- Laminate: Laminart Velvetex, Linear Wood
- Inside backs: 3" foam box cushion, diamond tufted
- Seat: 3" upholstered, foam box cushion
- Upholstery: Sta-Kleen Varnish, Metal



Diamond-Tufted Straight Banquette



Photo: Alexander Design Group | www.alexanderdesigngroup.com | alexander@alexanderdesigngroup.com



Diamond-Tufted Half-Circle and Straight Banquettes

- Counter height
- Fully upholstered with horizontal channels on inside back
- Upholstery: Douglass Symphony Vintage, Paprika
- Tapered wood legs



Half-Circle Counter-Height Banquette





Photo: R. Lopez, D. Eater, <https://imgur.com/wwy9wst>



Half-Circle Counter-Height Banquette | Red Oak Tabletops



- Bar height
- Fully upholstered
- Upholstery: Douglass
Symphony Vintage, Paprika
- Sapele kickbase



Banquettes with Vertical and Horizontal Channels



Banquettes with Vertical and Horizontal Channels | Red Oak Tabletops



Banquettes with Vertical and Horizontal Channels | Red Oak Tabletops

- Bar height
- Padded seat
- Upholstery: Douglass Stipple Vinyl, Chutney
- High-density foam seat
- Metal base with bright metal finish



U-Shaped Bench with Metal Base





- Smooth inside back
- Sinuous spring seat with high-density foam padding
- Back upholstery: Momentum Textiles Mix, Lanai
- Seat upholstery: Culp Cantina, Saddle
- Tapered maple legs
- Stain color: Mohawk, Medium Brown



Topeka Booth



- Inside back with 6" vertical channels
- Upholstery: Stinson Eli, Steel
- Kickbase wrapped with black polyvinyl



Sinatra Booth



- Fully upholstered; fabric rolled over top and sides
- Back upholstery: Stinson Mali, Carbon
- Seat upholstery: Stinson Napa, Vetiver
- Wood legs and frame
- Stain color: Black
- Chrome foot rest



Bar-Height Ontario Booth



- Fully upholstered; fabric rolled over top and sides
- Back upholstery: Stinson Velocity, Mars
- Seat upholstery: Naugahyde All-American, Black
- Maple legs and frame
- Stain color: Black



Atlanta Booth



- Fully upholstered with upholstered top cap and side caps
- Drop-front seat
- Inside back, top cap, and side caps upholstery: Luxury Fabrics Cocktail, Dry
- Seat upholstery: Culp Cantina, Quarry
- Kickbase wrapped with black polyvinyl



Kent Banquette



- Maple top cap, side caps, and seat support
- Biscuit-tufted inside back with square buttons
- 3" foam seat with webbing
- Inside back upholstery: Burch Utopia, Peacock
- Seat upholstery: GMF Destiny, Penny
- Square, brushed steel legs



Seasons Banquette



- Upholstered top cap and side caps
- Blind diamond-tufted inside back
- Finished outside back
- Drop-front seat
- Upholstery: Momentum Textiles Icon, Shadow
- Wood tapered faux legs on kickbase wrapped with black polyvinyl
- Combination electrical/USB outlets built into kickbase



Round Banquette



- Fully upholstered
- Back upholstery: Maharam: Coincide, Caribbean
- Seat upholstery: Momentum Textiles Cover Cloth, Electric
- Maple legs and seat support



Topeka Banquette



Photo: Choice Hotels, www.choicehotels.com/pennsylvania/allentown/ascend-hotels/pa817



Topeka Banquette



- Barn board reclaimed oak top cap, side caps, and seat support
- Stain color: Natural
- Inside back upholstery: Knoll Ikat Stripe, Lemon Drop
- Seat upholstery: Maharam Ledger, Tangerine
- Black powder coated metal channel around seat support
- 1½" square black metal legs



Rochester Booth



Photo: Carrie Fye Interior Design, www.cfidstudio.com/viva-chicken



Rochester Booth

- Barn board reclaimed oak
- Kickbase wrapped with black polyvinyl



Reclaimed Oak Waiting Bench



- Barn board reclaimed oak
- Square metal legs



Reclaimed Wood Detail



Reclaimed Oak Waiting Bench with Legs



- Solid cedar construction
- 2" cushion upholstered in Maharam Ledger, Tangerine



Cedar Outdoor Banquette





Photo: Carrie Fye Interior Design, www.cfidstudio.com/viva-chicken



Cedar Outdoor Banquette



- Button-tufted inside back
- High-density foam padded sinuous spring seat
- Back upholstery: Fabricut Monte Albano, Confetti
- Seat upholstery: Arc Com Iguana, Frog
- Maple seat support and 4½" tapered legs



Sofa Booth



- Frame: 1" square raw metal tubing
- High-density foam seat
- Back upholstery: Nassimi Symphony, Vintage Tobacco
- Seat upholstery: Designtex; Microgrid, Aluminum
- Wood outside back



Metal-Frame Circular Booth



- Upholstered top cap, side caps, crumb wipe, and seat support
- Upholstery: Naugahyde Zodiac, Charcoal
- Cording accent: Naugahyde Zodiac, Silver
- Kickbase wrapped with black polyvinyl



Adams Corner Booth



- Upholstery rolled over top
- Removable seat
- Inside back upholstery: Reid Wiltin Vivacious Velvet, Cyan
- Seat upholstery: Designtex Calman, Clover
- Laminate crumb wipe and seat support; Interior Arts, Black Impression
- Kickbase wrapped with black polyvinyl



Banquette



- Diamond-tufted inside back with fabric rolled over the top
- Upholstery: Culp Cantina, Cocoa
- Nailhead trim on seat support
- 6" high wood round bun legs
- Stain color: Shaker



London Booth



London Booth | Mixed-Species Tabletops

- Smooth inside back
- Back upholstery: Mayer Nirvana, Spa
- Seat upholstery: Paul Brayton Beckett, Antique
- 6" high wood round bun legs
- Stain color: Shaker



Half-Circle Banquette





Photo: A. Martin and Company, <http://amartinc.com/project/poros-restaurant>



Diamond-Tufted Booth, Half-Circle Banquette, Mixed-Species Tabletop



- Maple top cap, side caps, seat support, and legs
- Inside back upholstery: Arc Com Moonbeam, Coffee
- Seat Upholstery: Douglass Grand Sierra, Chestnut



Duke Booth



Photo: Soft Touch Furniture



Duke Booth | Wood-Edge Tabletops



Photo: Soft Touch Furniture



Duke Booth | Maple Drop-Leaf Tabletops



- Maple seat support and legs
- Seat upholstery: Arc Com Gatsby, Godiva
- Powder-coated metal kickplate
- Pillows: Designtex Omar, Carmine



Texas Banquette



Photo: Soft Touch Furniture



Texas Banquette

- 14-gauge steel frame
- Teak seat board
- Hanging back cushion
- Upholstery: Sunbrella Dupione, Oak



Georgetown Bench





- Maple top cap, side caps, and seat support
- Back upholstery: Arc Com Masquerade, Salsa
- Seat upholstery: Arc Com Iguana, Otter
- Enclosed kickbase



Preston Booth



Photo: Soft Touch Furniture



Preston Booth | Laminate Tabletops



Photo: Soft Touch Furniture



Preston Booth | Laminate Tabletops | Bamboo Butcher Block Gathering Table

- Contoured foam inside back
- Drop-front rectangle-style high-density foam seat
- Kickbase covered in black polyvinyl
- Combination electrical/USB outlet set into the top



Godfrey Booth





Photo: Arlington Hotel, www.facebook.com/arlingtonnh





- Removable seat
- One-piece maple seat support
- Stain color: Perfect Brown
- Upholstery rolled over top and sides
- Upholstery: Culp Castillo, Red
- Titan 22 adjustable glides



Roosevelt Booth



- Wormy maple top cap, side caps, and seat support
- Removable seat
- Upholstered crumb wipe
- Upholstery: Culp Cantina, Cocoa
- Kickbase wrapped in black polyvinyl



Anderson Booth



- Maple top cap, side caps, and crumb wipe
- Stain color: Perfect Brown
- Button diamond tufted inside back
- Upholstery: Culp Cantina, Cocoa
- Kickbase wrapped in black polyvinyl



Minnesota Booth, Diamond Tufted Inside Back



- Maple top cap, side caps, and crumb wipe
- Stain color: Perfect Brown
- Smooth inside back
- Upholstery: Culp Cantina, Putty
- Kickbase wrapped in black polyvinyl



Minnesota Booth, Smooth Inside Back

- Solid wood frame
- Fluted legs
- High-density foam seat
- Upholstery: Flicker Ogee, Jewel



Elton Bench





- Sofa-style booth with arms
- Finished outside back
- Upholstery: Kai Etch, Clementine



Jersey Booth, Sofa-Style



- Chair-style booth with arms
- Finished outside back
- Upholstery: Macklemore
Crypton, Home Fiesta



Jersey Booth, Chair-Style



Photo: Bourbon Coffee, <https://myurl.com/mteqgic>



Jersey Booths



- Solid oak and wood veneer construction
- Custom stain match
- 12" upholstered back pad
- Seat with attached cushion
- Kickbase wrapped in black poly vinyl
- Combination electrical and USB outlets in seat support



Rome Booth



Rome Booth

- Corner unit
- Solid wood and wood veneer construction, pine
- Stain color: Colonial Maple
- Removable 1½" thick high-density foamboard seat
- Upholstery: Naugahyde Universal, American Beauty



Boardwalk Booth





Photo: Soft Touch Furniture



Boardwalk Booth | Mixed-Species Table

- Banquette
- Solid wood and wood veneer construction, pine
- Wood seat
- Stain color: Colonial maple



Boardwalk Banquette





Photo: Schi Touch Furniture



Boardwalk Banquette

- Waiting bench
- Solid wood and wood veneer construction, pine
- Wood seat
- Stain color: Colonial maple



Boardwalk Booth, Waiting Bench



- Solid wood and wood veneer construction, maple
- Stain color: Chestnut
- Upholstered back pad
- Removable seat
- Inside back upholstery: United Fabrics Mars-42, Mineral
- Seat upholstery: United Fabrics LX-701, Spa
- Kickbase wrapped in black polyvinyl



Wilmington Booth



Photo: Kiechler Labels Architects, <https://tinyurl.com/yg6ef4fw>



Wilmington Booth | Mixed-Species and Wormy Maple Tabletops



- Oak top cap, side caps, seat support, and crumb wipe
- Stain color: Rosewood
- Removable seat
- Inside back upholstery: Momentum Textiles Riga, Birch
- Seat upholstery: Wolf Gordon Granite
- Kickbase wrapped with black polyvinyl





Photo: East End Grill, www.facebook.com/eastendman



Preston Booth



- Fully upholstered
- Drop-front seat
- Inside back upholstery: HBF Textiles High Rise, Empire
- Seat upholstery: Anzea Highland, Black Pudding



Wall Banquette



- Oak frame
- Stain color: Chestnut
- Back upholstery: Pallas Textiles Surface, Ash
- Seat upholstery: Designtex Ludington, Chocolate
- Angled kickbase wrapped with black polyvinyl



Booth



- Cypress top cap, side caps, and seat support
- Hit-and-miss planing
- Boards aligned vertically on seat support
- Stain Color: Sherwin Williams Chestnut
- Inside back: fully upholstered with 2" reveal above upholstered back
- Removable seat
- Inside back upholstery: Momentum Textiles Beep, Furnace
- Seat upholstery: Spradling Whisper, Salsa
- Kickbase wrapped with black polyvinyl





- Cypress top cap, side caps, and seat support
- Hit-and-miss planing
- Boards aligned vertically on seat support
- Stain Color: Sherwin Williams Chestnut
- Inside back: fully upholstered with 2" reveal above upholstered back
- Removable seat
- Upholstery: Spradling Whisper, 2124 Salsa
- Kickbase wrapped with black polyvinyl



- Solid wood and wood veneer construction; maple
- Stain color: Charcoal
- Removable seat
- Circular booth upholstery: Culp Cantina, Cocoa
- Single booths upholstery: Culp Cantina, Peanut
- Kickbase wrapped with black polyvinyl



Bigham Booth with Back Pad, Circular and Single





- Chair-style booth with arms
- Finished outside back
- Upholstery: Culp Cantina, Cranberry



Jersey Booth, Chair-Style



- Fully upholstered
- Padded foam back
- High density foam padded sinuous-spring seat
- Back upholstery: P/Kaufmann Samarkand, Peacock
- Seat upholstery: Valley Forge Fabrics Moment, Latte
- Maple legs and seat support
- Open base with 4½" tapered legs
- Stain color: Mocha Suede



Topeka Booth

Photo: Hampton Inn, <https://trywalk.com/members3>

- Overall dimensions: 18'6" × 68" × 44"
- Fully upholstered
- Inset laminate top cap
- High-density foam seat
- Kickbase covering material added on site



Oasis Banquette



Photo: Hilton Home2, <https://anyt.com/m/9wv0qz>



Oasis Banquette



- Button tufted inside back
- Drop-front seat
- Wood bun feet with recessed kickbase



Fairfield/Toronto Booth

Il Pizzaiolo, Warrendale, Pennsylvania



Photo: Soft touch furniture



Fairfield/Toronto Booth



- Upholstery rolled over back and sides
- Diamond-tufted inside back
- Removable drop front seat
- Upholstery: Mitchell Maverick II, Charcoal
- Kickbase covered with black polyvinyl



Clearwater Booth



Clearwater Booth | Ash Tabletops



- Upholstery rolled over back and sides
- Diamond-tufted inside back
- Removable drop front seat
- Upholstery: Mitchell Maverick II, Charcoal
- Kickbase covered with black polyvinyl



Clearwater Booth



Clearwater Booth | Ash Tabletops



Photo: Ed Massey, <http://edmassey.com/by-category/hospitality-3/gallery/>



Clearwater Booth | Ash Tabletops

- Maple seat support and turned legs
- Stain color: Perfect Brown
- Diamond tufted inside back



Custom Bench





Photo: Linda Phillips Design <http://linda-phillips.squarepace.com/#/just-finished>



Custom Bench



- Bar-height
- Solid wood and wood veneer construction, ash
- Stain color: Minwax Ipswich Pine
- 2½" thick high-density foam cushion seat pad attached to frame
- Button tufting on back pad
- Inside back upholstery: Maharam Column, Midnight
- Seat upholstery: Stinson Sundance, Macaroon



Bar-Height Midwood Booth



- Solid wood and wood veneer construction, ash
- Stain color: Minwax Ipswich Pine
- 2½" thick high-density foam cushion seat pad attached to frame
- Button tufting on back pad
- Inside back upholstery: Maharam Column, Midnight
- Seat upholstery: Stinson Sundance, Macaroon



Midwood Booth



- Counter-height
- Solid wood and wood veneer construction, ash
- Stain color: Minwax Ipswich Pine
- 2½" thick high-density foam cushion seat pad attached to frame
- Button tufting on back pad
- Inside back upholstery: Momentum Textiles Cover Cloth, Flame
- Seat upholstery: Stinson Sundance, Valentine



Counter-Height Midwood Double Booth



Photo: DS Studio; <http://dsstudio.com/2015/09/21/midwood-smokehouse/>



Midwood Booths | Ash Tabletops



- Solid wood and wood veneer construction, ash
- Stain color: Minwax Ipswich Pine
- 2½" thick high-density foam cushion seat pad attached to frame
- Seat upholstery: Stinson Sundance, Valentine



Reno Booth



- Solid wood and wood veneer construction, ash
- Stain color: Minwax Ipswich Pine
- 2½" thick high-density foam cushion seat pad attached to frame
- Seat upholstery: Stinson Sundance, Valentine



Reno Double Booth

Midwood Smokeshack, Matthews, North Carolina



Photo: Midwood Smokeshouse, <http://midwoodsmokeshouse.com>



Reno Double Booth | Ash Tabletops



- Frame: 1" square metal tubing with black powder coat finish
- Inside back upholstery: Stinson Sundance, Macaroon and Maharam Column, Midnight
- Seat upholstery: Stinson Sundance, Macaroon



Belmont Booth



Photo: Midwood Smokehouse



Belmont Booth



- Fabric rolled over top
- Upholstered side caps
- Vertical channel stitching on inside back
- Upholstery: Culp Castillo, Buff
- Kick base supplied and installed by others



Banquette



- Serpentine shape
- Fabric rolled over top
- Upholstered side caps
- Vertical channel stitching on inside back
- Upholstery: Culp Castillo, Buff
- Kick base supplied and installed by others



Serpentine Banquette



- U-shape
- Fabric rolled over top
- Upholstered side caps
- Vertical channel stitching on inside back
- Upholstery: Culp Castillo, Buff
- Kick base supplied and installed by others



U-Shaped Booth



Photo: Naira Design Group, <http://nairadesign.com/portfolio/restaurant-mosaic>



U-Shaped Booth



- Designed to match existing booths
- Windsor Mahogany laminate side cap, top caps, crumb wipe, and finished outside backs
- 6" horizontal headroll on inside back
- Removable seat
- Inside back and headroll upholstery: Arc-Com Lotus, Mango
- Seat, seat support, and decorative welt upholstery: Arc-Com Shimmer, Permission
- Kickbase wrapped with black polyvinyl



Anderson Booth



- Removable seat
- Top caps are padded to ensure comfort and well- tailored shape
- Finished outside back
- Kickbase wrapped with black polyvinyl



Adams Banquette

- Fully upholstered seat and seat support
- Kickbase wrapped with black polyvinyl



Edgewater Waiting Bench



Photo: Urban Built, <http://urbanbuiltllc.com/> Photo: Nailah's Kitchen



Waiting Bench



- Fully upholstered
- Diamond button-tufted inside back with fabric rolled over top and sides
- Upholstery: Culp Cantina, Saddle
- Kickbase wrapped with brown polyvinyl



Latin Booth, Radius-Style



Photo: Google+ user James C. <https://tinyurl.com/mw6p6gix>



Latin Booth, Radius-Style

- Fully upholstered
- Diamond button-tufted inside back with fabric rolled over top and sides
- Upholstery: Culp Cantina, Saddle
- Kickbase wrapped with brown polyvinyl



Latin Booth, Reverse-L Banquette



- Maple legs
- Stain color: Perfect Brown
- Fully upholstered
- Removable drop-front seat
- Diamond-tufted inside back with fabric rolled over top and sides
- Upholstery: Culp Cantina, Saddle



Samuel Booth



Photo: Nose Dive, www.instagram.com/nosenosedive





- Maple legs
- Stain color: Perfect Brown
- Fully upholstered
- Removable drop-front seat
- Smooth inside back with fabric rolled over top and sides
- Upholstery: Culp Cantina, Saddle



Custom Samuel Booth, U-Shaped



Photo: Google+ user James C. . <https://tinyurl.com/mw66gkx>



Custom Samuel Booth, U-Shaped



- Built to customer's specs
- 2" raw steel tube frame
- Custom powder coat color
- Back upholstery: Maharam Soft Tweed, Flax
- Seat upholstery: Maharam Scuba, Autumn



Steel Tube Bench



Photo: Google+ user Brian McManus - <https://tinyurl.com/koxw16>



Steel Tube Bench

- Built to customer's specs
- 2" raw steel tube frame
- Custom powder coat color
- Back upholstery: Maharam Soft Tweed, Flax
- Seat upholstery: Maharam Scuba, Autumn



Steel Tube U-Shaped Booth





Photo: Yelp user Jessica N., <https://tinyurl.com/mwmc7868>



Steel Tube U-Shaped Booth



- Upholstery rolled over sides
- Removable seat
- Inside back and top cap upholstery: Maharam Coda by Kvadrat, 442
- Seat upholstery: Luna Textiles Wish, Tartine
- Unfinished one-piece seat support and kickbase



Roosevelt Booth



- Solid wood top cap and side caps
- Glass dividers with solid wood frame and crystal fluted tempered glass insert
- Hanging back
- Upholstered crumb wipe
- Custom upholstery pattern
- Upholstery: Symphony Classic, Claret
- Accent stripe upholstery: Symphony Classic, Chamois
- Piping upholstery: Symphony Classic, Navy
- Kickbase wrapped with black polyvinyl



Silver Double Booth with Glass Divider



Photo: Silver Diner



Silver Double Booths | Laminate Tabletops



Photo: Silver Diner



Silver Double Booths | Laminate Tabletops



- Solid wood top cap and side caps
- Upholstered crumb wipe
- Upholstery: Symphony Classic, Claret
- Accent stripe upholstery: Symphony Classic, Chamois
- Piping upholstery: Symphony Classic, Navy
- Kickbase wrapped with black polyvinyl



Silver Corner Booth



Photo: Silver Diner



Silver Corner Booth with Coat Posts | Laminate Tabletops

- Built to customer's renderings
- Upholstery: Quantum Alpha, Stalk and Quantum Alpha, Rhubarb
- Kickbase wrapped with black polyvinyl



Oxford Booth



- Poplar top cap, side caps, crumb wipe, and seat support
- Wood crumb wipe
- Removable seat
- Removable/replaceable back pad
- Back upholstery: Arc Com Radius, Smoke
- Seat upholstery: Arc Com Dakota, Citrine



Booth

- Solid poplar and wood veneer construction
- Wood legs with Robo 12 leveling glides
- Removable seat
- Seat upholstery: Culp Cantina, Molasses



Brussels Waiting Bench





- Wood seat support
- 18" seat height
- 2" high-density foam padded seat
- Upholstery: Culp Cantina, Molasses
- Kickbase wrapped with black polyvinyl



Washington Waiting Bench



- Solid oak and wood veneer construction
- Oak inside back, seat, and front of seat; 1" thick planks
- Recessed side panels with laminate
- Laminate: Arpa 0248, Erre finish



Double Booth



- Solid oak and wood veneer construction
- Oak inside back, seat, and front of seat; 1" thick planks
- Recessed side panels with laminate
- Laminate: Arpa 0248, Erre finish



Single Booth



- Sinuous shape
- Maple legs
- Stain color: Golden Oak
- Fully upholstered
- Seat: high density foam
- Inside back upholstery: Culp Fine Tune, Tangelo
- Seat upholstery: Culp Cantina, Saddle



- $\frac{3}{4}$ circle unit
- Maple legs
- Stain color: Golden Oak
- High-density foam seat
- Upholstery: Culp Fine Tune, Tangelo



Utah Bench

- Maple top cap, side caps, and one-piece support
- 3" contoured foam seat
- Biscuit tufted inside back
- Upholstery: Culp Gunslinger, Saddle



Custom Booth



Custom Booth



- Wood species: maple
- Inside back veneer plywood has a "barber pole" effect—light and dark color variation between the individual flitches in book- matched veneer
- Stain color: Colonial Maple
- Removable seat with high-density contoured foam
- Upholstery: Naugahyde Spirit Millennium, Cinnamon
- Kickbase covered with black polyvinyl



Bigham Booth with Back Pad



- Solid maple and wood veneer plywood construction
- 4" wide planks run horizontally across inside back, outside back, and seat support
- Removable padded seat
- Upholstery: Nassimi Symphony Glaze, Marine
- Kickbase wrapped with black polyvinyl



Moby Booth



- Fully upholstered
- Inside back has five horizontal channels
- Removable drop front seat
- Upholstery: Designtex Pleat, Coal
- Kick base: black poly vinyl
- Matching pillows



Custom Bench



Photo: Downtown Cleveland Alliance, <https://imgur.com/m360od>



Custom Bench



- Welded square steel tubing frame
- Black powder coat finish
- Upholstery: Arc Com Frontier, Rhino



Metal Frame Booth



Photo: 811 Kitchen Bar Lounge, www.zagat.com/r/811-kitchen-bar-lounge-cleveland



Metal Frame Booth



- Fabric rolled over top and sides
- Diamond-tufted inside back
- Seat upholstery: Architex, English Leather, Colonial; polyurethane finish
- Back upholstery: Knoll Chroma, Cayenne
- Red oak base with 3" square red oak legs
- Stain color: Custom



Bar-Height Samuel U-Booth



Bar-Height Samuel U-Booth

- Fabric rolled over top and sides
- Diamond-tufted inside back
- Back upholstery: Knoll Chroma, Cayenne
- Seat upholstery: Architex, English Leather, Colonial; polyurethane finish
- Red oak base with 3" square red oak legs
- Stain color: Custom



Semicircular Samuel Booth





Photo: Soft Touch Furniture



Semicircular Samuel Booth



- Fabric rolled over top and sides
- Back upholstery: Architex, Gaia, Onyx
- Seat upholstery: Architex, English Leather, Colonial; polyurethane finish
- Diamond-tufted inside back
- Red oak base with 3" square red oak legs
- Stain color: Custom



Samuel Booth

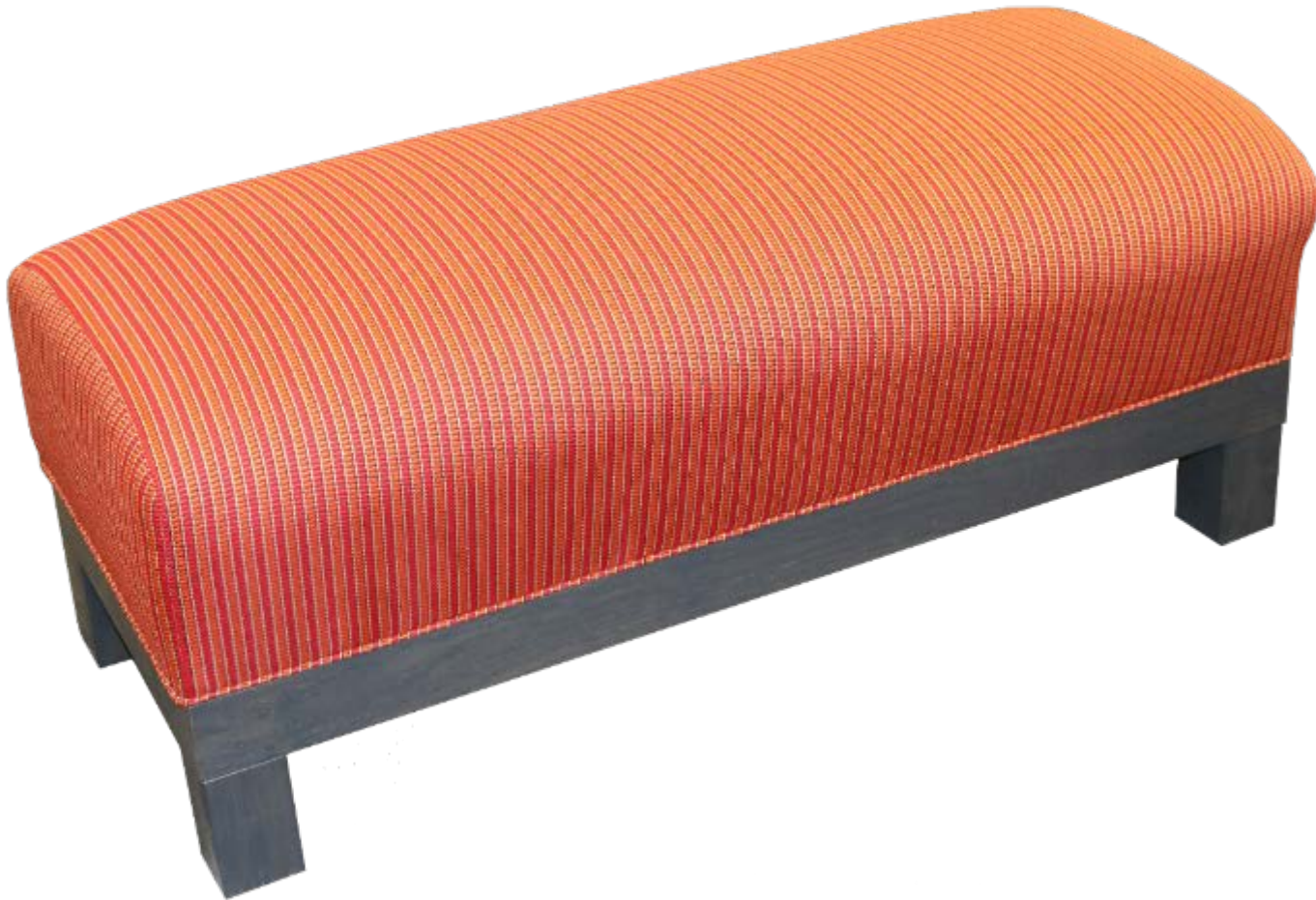


Photo: TripAdvisor user Libral123456, <https://tripadvisor.com/4616334>



Booth

- Seat upholstery: Knoll Sutton, Windsor
- 3" square red oak legs
- Stain color: Custom



Waiting Bench





- Built to customer's rendering
- Oak legs
- Contoured foam seat
- Rollover top; finished outside back
- Single button tuft on inside back
- Upholstery: Stinson Nauga Leather, Ponderosa



Banquette



- Built to customer's rendering
- Oak legs
- Contoured foam seat
- Rollover top; finished outside back
- Single button tuft on inside back
- Upholstery: Stinson Nauga Leather, Ponderosa



Circular Booth



- Built to customer's rendering
- Solid wood and wood veneer construction; oak
- Planks run horizontally across inside back, outside back, and seat support
- Main stain color: Chocolate-Walnut
- Side stain color: White Wood



Oak Booth



Photo: Maplewood Kitchen, www.facebook.com/pg/Maplewoodkitchen/photos/



Oak Booths and Circular Booth

Maplewood Kitchen and Bar, Cincinnati, Ohio



Photo: Jeremy Kramer, Cincinnati Magazine, <https://tinyurl.com/m88sp8>



Booth



- Fully upholstered; fabric rolled over top and sides
- Diamond button tufting on inside back
- Upholstery: Char 7491, Sable
- Kickbase covered with brown polyvinyl



Latin Banquette



Photo: Anthony Scavo Chicago Reader <https://myurl.com/mvapoxy>



Latin Banquette | Distressed Oak Tables



- Oak top cap and kickbase
- Wainscoating inside back and seat support
- Individual hanging back pads
- Padded seat
- Seat upholstery: Char 3403, Maui Saddle



Jay Banquette



Photo: Soft Touch Furniture



Jay Banquette | Distressed Oak Tables

- Mixed-species wood
- Distressed finish
- Curved metal legs with black matte powder coat





Pacific Bench | Trestle Table

- Maple seat support and legs
- Stain color: Walnut
- Biscuit-tufted inside back; fabric rolled over top and sides
- Removable seat



Joe Booth, U-Shaped





- Maple seat support and legs
- Stain color: Walnut
- Biscuit-tufted inside back; fabric rolled over top and sides
- Removable seat



Joe Booth





- Side and top caps are padded to ensure comfort and a well-tailored shape
- Removable seat
- Inside back, top cap, side caps upholstery: Culp Cantina, Peanut
- Seat and seat support upholstery: Culp Oregon Trail, Java
- Kickbase wrapped with black polyvinyl



Adams Booth



- Side and top caps are padded to ensure comfort and a well-tailored shape
- Removable seat
- Diamond tufted inside back
- Upholstery: Culp Oregon Trail, Java
- Kickbase wrapped with black polyvinyl



Adams Booth, Tufted



- Sofa-style booth
- Maple legs
- Upholstery: Brentano Sauganash, Hiawatha
- Kickbase recessed behind legs for ease of cleaning
- Kickbase wrapped with black polyvinyl



Topeka Booth



Topeka Booth | Live-Edge Gathering Table



- Oak top cap and side caps
- Accent welt on inside back
- Removable seat
- Upholstery: Culp Cantina, Peanut
- Kickbase wrapped with black polyvinyl



Berlin Booth



- Vertical channel stitching on inside back
- Upholstered top cap and side caps
- Removable seat
- Upholstered crumb wipe
- Back upholstery: Stinson Squirrel, Chinchilla
- Seat upholstery: Stinson Rainier, Peat
- Kickbase covered with black polyvinyl



Campbell Booth



Photo: yelp user Tom F., www.yelp.com/biz_photos/lulus-of-commerce-walled-lake



Campbell Booth



- Solid wood and wood veneer construction
- Maple top cap, side caps, seat support, and crumb wipe
- Stain color: Mahogany
- Diamond tufted inside back
- Removable seat
- Upholstery: Boltaflex Colorguard, Black
- Kickbase covered with black polyvinyl



Charleston Booth



Photo: Peppino's Neapolitan, www.facebook.com/pg/PeppinosNeapolitan/photos



Charleston Booth



- Maple top cap, side caps, seat support and crumb wipe
- Stain color: Fruitwood
- Back upholstery: Stinson Embrace, Glow
- Seat upholstery: Culp, Cantina, Coco
- 1½" square metal legs with black powder coat and Robo 12 floor glides



Dakota Booth



- Maple side caps and seat support
- Upholstery rolled over top
- Back upholstery: Tri-kes Drizzle, Caribbean Rain
- Seat upholstery: Tri-kes Patterson, Tick Tock
- Square metal legs with powdercoat finish in Stardust Silver



Eleanor Booth



- Sofa-style booth
- Oak legs
- Stain color: Walnut
- Upholstery: Perennials Fabrics Vibes, Hello Sailor
- Two tapes along the bottom edge: 1" French grosgrain ribbon in Prussian and $\frac{3}{4}$ " picot border in Coral
- Nickel nailheads spaced $\frac{3}{4}$ " apart over the tape trim



Topeka Booth

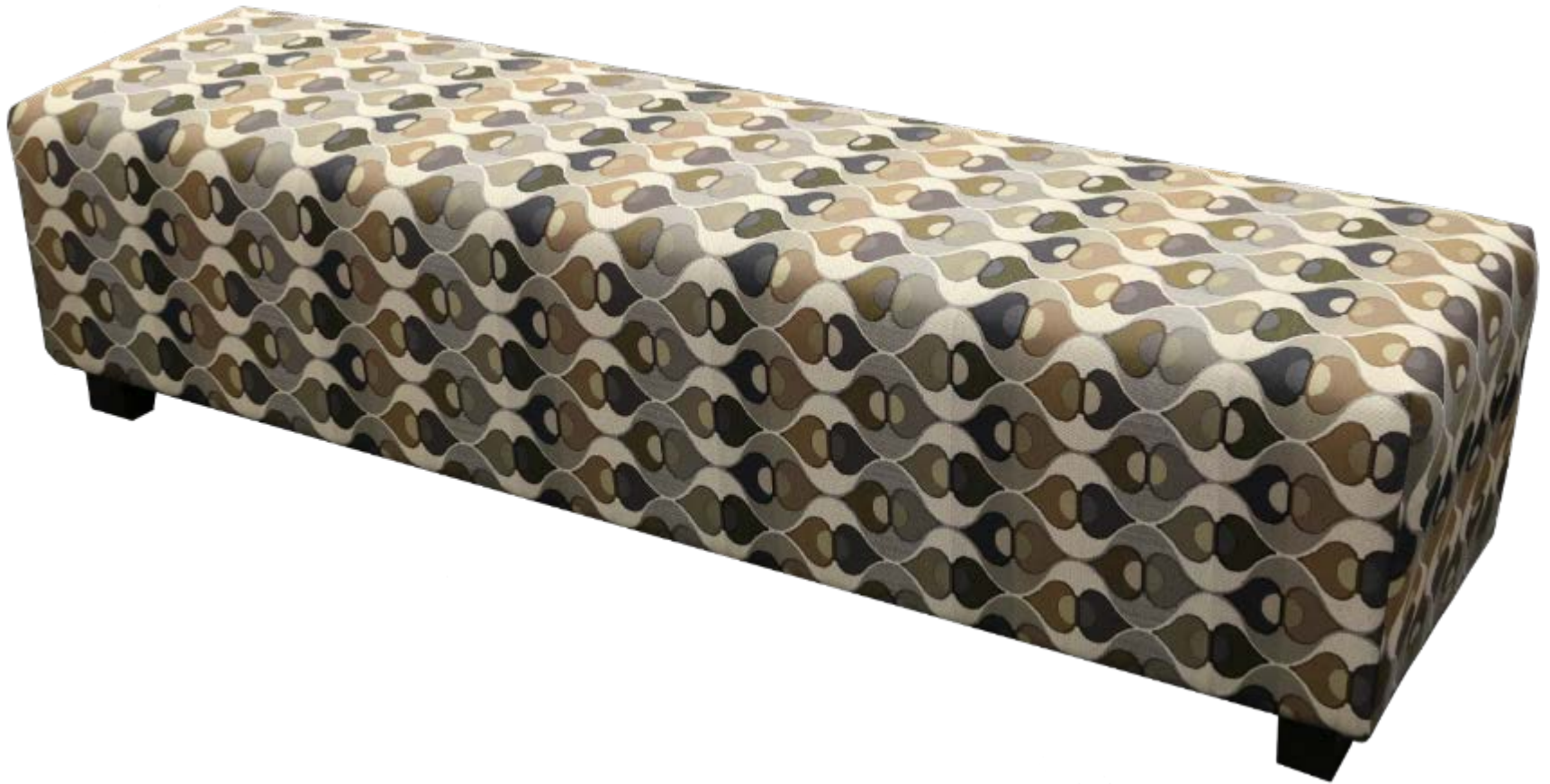


Photo: SSAM, <http://ssamadr.com/ssam-gallery>



Topeka Booth

- Maple legs
- Stain color: Walnut
- Upholstery: Mayer Fabrics
Nirvana, Mica



Vineland Waiting Bench





- Button diamond tufting on inside back
- Removable seat
- Inside back upholstery: Culp Bravado, Ash
- Seat, top cap, side caps, and seat support upholstery: Culp Bravado, Portobella
- Kickbase wrapped with black polyvinyl



Hex Booth



- Fully upholstered
- Fabric pulled over top and sides
- Custom stitching on inside back
- Inside back upholstery: Reid Witlin Wool Like, Wine
- Seat upholstery: Mayer Antique, Oxblood
- Kickbase covered with black polyvinyl



18' U-Booth



18' U-Booth



- Fully upholstered
- Fabric pulled over top and sides
- Custom stitching on inside back
- Inside back upholstery: Reid Witlin Vivacious Velvet, Mustard
- Seat upholstery: Mayer Komodo, Maroon
- Kickbase covered with black polyvinyl



U-Booth, Mustard



Livery, Indianapolis, Indiana

Photo: Livery, <https://imgur.com/mj4t9ry>



U-Booth, Mustard

- Fully upholstered
- Fabric pulled over top and sides
- Custom stitching on inside back
- Inside back upholstery:
Brentano Anthem, O Canada
- Seat upholstery: Mayer
Antique, Apple
- Kickbase covered with black
polyvinyl



U-Booth, Red



Photo: Livery, www.livery-restaurant.com



U-Booth, Red

- Maple construction
- Custom stain
- Back pad upholstery: Carnegie Fabrics Infinity, Flora
- Upholstered seat pad: Mayer Antique, Sapphire



Custom Banquette





Photo: Phnommen Design, <https://rjnyul.com/76wmtf>



Custom Banquette



- Maple legs
- Stain color: Grey
- Smooth inside back; fabric rolled over top and sides
- Inside back upholstery: Culp Bunnyhop, Chrome
- Seat upholstery: Culp Cantina, Black
- Recessed kickbase covered with black polyvinyl



Topeka Booth

- Lightly distressed oak
- Stain color: Old Manor Pine
- Custom metal base with black powder coat



Bench



Photo: Soft Touch Furniture



Bench



- Maple construction
- Stain color: Old Manor Pine
- Hanging back pad
- Removable seat
- Back pad upholstery: Maharam Chock, Smoke
- Seat upholstery: Mayer Fabrics Uptown, Black Gold
- Maple legs
- Recessed kickbase covered with black polyvinyl



Custom Booth



- Maple construction
- Stain color: Old Manor Pine
- Hanging back pad
- Removable seat
- Back pad upholstery: Arc Com
Compass, Godiva
- Seat upholstery: Mayer
Fabrics Uptown, Black Gold
- Maple legs
- Recessed kickbase covered
with black polyvinyl



U-Booth



Photo: Soft Touch Furniture



U-Booth | Oak Tabletops



- Solid wood and wood veneer construction, white oak
- Stain color: Alder
- Removable back pad
- Removable seat
- Inside back upholstery: Architex Sandbox, Castle
- Seat upholstery: Culp Embrace Recycled Leather, Putty
- ½" diameter smooth steel hairpin legs with clear coat finish
- Combination electrical/USB outlet in seat support



Booth with Electrical/USB Outlet



- Inside back: contoured foam
- Rectangular-style drop- front seat
- Inside back upholstery: Culp Archetype, Silt
- Seat upholstery: Culp Hathaway, Navy
- Kickbase covered with black polyvinyl





- Solid walnut top cap and side caps; mitered 45 degrees
- Removable seat
- Upholstery: Concertex Incognitus , Truffle
- Kickbase covered with black polyvinyl



Eagle Booth



- Solid walnut top cap and side caps
- Drop-front seat
- Upholstery: Concertex Incognitus , Truffle
- Kickbase covered with black polyvinyl



Eagle Double Booth

- Solid walnut top cap and side caps
- Drop-front seat
- Upholstery: Concertex Incognitus , Truffle
- Kickbase covered with black polyvinyl



Eagle $\frac{3}{4}$ Circle Booth





Photo: DMAC Architecture. <http://dmacarch.com/doc-bs-tampa>



Eagle Booth



Photo: DWAC Architecture: <http://dmac.arch.com/doc-bs-tampa>



- Cumaru (Brazilian teak) construction



Doc Outdoor Bench



Photo: Yelp user Samantha D., <https://tinyurl.com/kalnj3so>



Doc Outdoor Bench | Outdoor Tables



- Oak top cap and side caps
- Stain color: Golden Oak
- Accent welt on inside back
- Inside back and welt upholstery: Stratosphere, Taupe
- Seat upholstery: Naugahyde Rouge, Walnut
- Kickbase wrapped with black polyvinyl



Berlin Booth



- Solid maple and wood veneer construction
- Wood crumb wipe
- Hanging back pad
- Removable seat
- Back pad upholstery: Culp Winslow, Moonbeam
- Seat upholstery: Culp Cantina, Black
- Kickbase covered with black polyvinyl



Bigham Booth



- Wing-style bench
- Blind biscuit tufting on inside and outside back
- Maple enclosed kickbase
- Stain color: Walnut



Hoover Booth



- Maple top cap and side caps
- Stain color: Walnut
- Finished outside back
- Removable seat
- Upholstery: Spradling
Diamante, Honey
- Kickbase wrapped with black
polyvinyl



Anderson Single Booth



- Maple top cap and side caps
- Stain color: Walnut
- Removable seat
- Upholstery: Spradling Diamante, Honey
- Kickbase wrapped with black polyvinyl



Anderson Double Booth



- Maple top cap, side caps (with decorative detail), and seat support
- Stain color: Rosewood
- Platform seat with high-density foam
- Inside back upholstery: Burch Vivo, Adobe
- Seat upholstery: Naugahyde Dolphin, Terracotta
- Kickbase covered with black polyvinyl



Harvest Booth



- Distressed oak top cap and side caps
- Stain color: Old Manor Pine
- Diamond-tufted inside back
- Removable seat
- Upholstery: Culp Cantina, Black
- Kickbase covered with black polyvinyl



Anderson Booth, Bar Height



- Distressed oak top cap and side caps
- Stain color: Old Manor Pine
- Diamond-tufted inside back
- Removable seat
- Upholstery: Culp Cantina, Black
- Kickbase covered with black polyvinyl



Anderson Double Booth



- Fully upholstered
- Fabric rolled over top and sides
- Diamond-tufted inside back
- High-density foam seat
- Nailhead trim
- Wood legs



Banquette

- High-density foam seat
- Nailhead trim
- Wood legs



Bench



- Solid maple and wood veneer construction
- Storage drawers built into seat support
- Finished storage area under seat accessible by lid with toybox hinge
- Lights in drawers come on automatically when drawers are opened; lights in storage boxes come on when box lid is raised
- Upholstery rolled over top of booth backs, bolster-style
- Varied upholstery and tufting styles on booth backs
- Combination electrical/USB outlets in seat supports



Banquette



- Solid maple and wood veneer construction
- Storage drawers built into seat support
- Finished storage area under seat accessible by lid with toybox hinge
- Lights in drawers come on automatically when drawers are opened; lights in storage boxes come on when box lid is raised
- Upholstery rolled over top of booth backs, bolster-style
- Varied upholstery and tufting styles on booth backs
- Combination electrical/USB outlets in seat supports



Banquette, Seat Storage Detail



- Solid maple and wood veneer construction
- Storage drawers built into seat support
- Finished storage area under seat accessible by lid with toybox hinge
- Lights in drawers come on automatically when drawers are opened; lights in storage boxes come on when box lid is raised
- Upholstery rolled over top of booth backs, bolster-style
- Varied upholstery and tufting styles on booth backs
- Combination electrical/USB outlets in seat supports



Banquette, Seat Storage Detail



Photo: Soft Touch Furniture



Banquettes with Metal Railings



Banquettes with Metal Railings



Photo: Rey Lopez, DC Eater, <https://nyu.com/la-ny>



Banquettes with Metal Railings



Banquette, Alternate Upholsteries



- Oak top cap, side caps, and seat support
- Finished outside backs
- Stain color: Charcoal
- Removable seat
- Inside back upholstery: Douglas Kilkeny Tweed, Briar
- Seat upholstery: Douglass Spirit Millennium, Bisque
- Kickbase wrapped with black polyvinyl



Anderson Single Booth



- Oak side caps and seat support
- Finished outside backs
- Stain color: Charcoal
- Removable seat
- Upholstery rolled over top
- Inside back upholstery: Douglas Kilkeny Tweed, Briar
- Seat upholstery: Douglass Spirit Millennium, Bisque
- One-piece seat support and kickbase wrapped with black polyvinyl



Roosevelt Double Booth (44" high)



- Oak side caps and seat support
- Finished outside backs
- Stain color: Charcoal
- Removable seat
- Upholstery rolled over top
- Inside back upholstery: Douglas Kilkeny Tweed, Briar
- Seat upholstery: Douglass Spirit Millennium, Bisque
- One-piece seat support and kickbase wrapped with black polyvinyl



Roosevelt Double Booth (36" high)



- Poplar top cap, side caps, crumb wipe, and seat support
- Wood crumb wipe
- Removable seat
- Removable/replaceable back pad
- Back upholstery: Architex Theory, Exercise
- Seat upholstery: Culp Cantina, Quarry



Charleston Booth



Photo: Soft Touch Furniture



Booth



Photo: Soft Touch Furniture



Photo: Soft Touch Furniture



Preston Booth | Laminate and Wood Edge Tabletops

- Hardwood poplar construction
- Stain color: Rusty Poplar
- Removable seat
- Seat upholstery: Culp Cantina, Quarry
- 1½" square metal legs with black powder coat



Waiting Bench





Photo: Soft Touch Furniture



Waiting Bench



- Solid wood and veneer construction, red oak
- Veneer plywood inside back
- Stain color: Golden Oak
- 12" upholstered back pad
- Upholstery: Culp Cantina Recycled Leather, Chili
- Kickbase wrapped with black polyvinyl



Maine Booth with Backpad, Corner Unit



- Solid wood and veneer construction, red oak
- Veneer plywood inside back
- Stain color: Golden Oak
- 12" upholstered back pad
- Upholstery: Culp Cantina Recycled Leather, Chili
- Kickbase wrapped with black polyvinyl



Maine Booth with Backpad

- Red oak seat support
- Stain color: Golden Oak
- Upholstery: Culp Cantina Recycled Leather, Chili
- Kickbase wrapped with black polyvinyl



Washington Waiting Bench



- Side and top caps padded to ensure comfort and a well-tailored shape
- Finished outside backs
- Vertical channel stitching on inside back
- Removable seat
- Upholstered crumb wipe
- Kickbase wrapped with black polyvinyl



Campbell Booth



Photo: Soft Touch Furniture



Campbell Booth | Ash Tabletops

- Fully upholstered with upholstered top cap and side caps
- Removable seat
- Diamond tufting on inside back
- Upholstery: United Conan, Bittersweet
- Kickbase wrapped with black polyvinyl



Adams Booth, U-Shaped with Diamond Tufting



- Removable seat
- Button tufting on inside back
- Upholstery: Wolf Gordon
Deltana, Quarry
- Kickbase covered with brown
polyvinyl



Latin Booth



Photo: Google+ user James C., <https://tinyurl.com/7p3dn3>



Photo: Google+ user James C., <https://tinyurl.com/7p3dn3>

Jianna, Greenville, South Carolina



Latin Booth | Ash Tabletops

- Removable seat
- Smooth inside back
- Finished outside back
- Upholstery: Wolf Gordon Deltana, Quarry
- Kickbase covered with brown polyvinyl



S-Shaped Unit



- Maple top cap, side caps, outside back, and seat support
- Stain color: Colonial Maple
- Removable seat
- Inside back upholstery: United Lush 89, Tourmaline
- Seat upholstery: Architex Born and Bread, Buble
- Kickbase wrapped with brown polyvinyl



Charleston Single Booth



- Maple top cap, side caps, outside back, seat support, and crumb wipe
- Stain color: Colonial Maple
- Removable seat
- Inside back upholstery: United Lush 89, Tourmaline
- Seat upholstery: Architex Born and Bread, Buble
- Kickbase wrapped with brown polyvinyl



Charleston Double Booth

Revitalise, Andover, Massachusetts



Photo: Jim Jean, Andover Townsman, <https://tinyurl.com/y7me.eabg>



Charleston Double Booth; Maple Live-Edge Tables



- Fully upholstered with upholstered top cap and side caps
- Removable seat
- Back fabric: Momentum Textiles Classico, Fame
- Seat fabric: Mayer Fabrics Caressa, Black
- Removable wood divider

Adams Booth with Divider





- Fully upholstered
- Padded top cap and side caps
- Removable seat
- Upholstery: Nassimi Esprit, Black
- Kickbase wrapped with black polyvinyl



- Solid wormy maple construction
- Stain color: Natural



Doc Bench



Photo: Salt Touch Furniture



Doc Bench



- Solid maple and wood veneer construction
- Custom stain
- Removable seat
- Upholstery: Culp Cantina, Cocoa
- Kickbase wrapped with black polyvinyl



Rome Booth



- Solid maple and wood veneer construction
- Custom stain
- Removable seat
- Upholstery: Culp Cantina, Cocoa
- Kickbase wrapped with black polyvinyl



Rome Booth



Rome Booth | Distressed Mixed-Species Tabletops

- Fully upholstered; upholstery rolled over top and sides
- Smooth inside back with headroll
- Upholstery: Naugahyde Spirit Millennium, Black
- Removable seat
- One-piece oak seat support



Roosevelt Booth

- Fully upholstered
- Smooth inside back
- Upholstery: Spradling
Stratosphere, Bronze
- Maple legs



Topeka Booth

- Maple top cap, side caps, seat support, and kickbase
- Decorative detail on side caps
- Smooth inside back
- Platform seat
- Back upholstery: Momentum Efflorescence, Sangria
- Seat upholstery: Spradling Stratosphere, Bronze



Harvest Booth, $\frac{3}{4}$ Corner





- Maple top cap, side caps, seat support, and kickbase
- Decorative detail on side cap
- Smooth inside back
- Platform seat
- Back upholstery: Momentum Efflorescence, Sangria
- Seat upholstery: Spradling Stratosphere, Bronze



Harvest Booth



Photo: Harvest Seasonal Grill and Wine Bar, <https://tinyurl.com/fohoy8>



Harvest Booth



- Diamond buttonless tufting on back, tight-cushion style
- Legs and frame are wood with metal laminate finish (Wilsonart Satin Brushed Gold Aluminum)
- Upholstery: Moore and Giles Notting Hill, Charcoal



Joe Banquette



Joe Banquette



Photo: Craig Halashian Architecture and Design, www.kalashian.com





- Banquette with built-in tables
- Wood legs and frame
- Seat upholstery: Architex Assembly, Forest
- Combination electrical/USB outlets in tables



Banquette with Built-In Tables



Photo: Craig Kalashian Architecture and Design www.kalashian.com.



Banquette with Built-In Tables



- Laminate surround
- Powder-coated metal base and legs
- Blind tufting on inside back
- Upholstery: Jamie Stern Bernini, Lighthouse
- Combination electrical/USB outlets in seat surround



Angled Sofa



Photo: Craig Kalashian Architecture and Design, www.kalashian.com



Angled Sofa



- Vertical channel stitching detail on inside back
- Fabric rolled over top and sides
- Drop-front seat
- Upholstery: Architex English Leather, Nuance
- Laminate kickbase and footrail; Wilsonart English Oak
- Powder-coated metal kickplate



Bar-Height Banquette



- Banquette fits around a square column
- Wood veneer top cap
- Self welt stitching details on seat and back
- Upholstery: Architex English Suede, Port
- Laminate kickbase; Wilsonart English Oak



Round Column Banquette



- Inside back: laminate with sewn biscuit tufting
- Wood veneer seat support frame
- Laminate inside back and kickbase; Wilsonart English Oak
- Built-in tables with access panels
- Built-in combination USB/electrical outlets
- Tables are wired for table lamps



Custom Sectional



- Inside back: laminate with sewn biscuit tufting
- Wood veneer seat support frame
- Laminate inside back and kickbase; Wilsonart English Oak
- Built-in tables with access panels
- Built-in combination USB/electrical outlets
- Tables are wired for table lamps



Custom Sectional Group



- Inside back: laminate with sewn biscuit tufting
- Wood veneer seat support frame
- Laminate inside back and kickbase; Wilsonart English Oak
- Built-in tables with access panels
- Built-in combination USB/electrical outlets
- Tables are wired for table lamps



Custom Sectional Group



Bar-Height Banquette



Photo: Katie Haleshan Architecture and Design, www.khah.com



Round Column Banquette

Sidecar, Washington Hilton, Washington, D.C.



Photo: Washington Hilton, <https://nyul.com/7c2zdy>



Custom Round Column Banquette, Custom Sectional Group, and Bar-Height Banquette



- Laminate back frame, crumb wipe, and kickbase; Wilsonart English Oak
- Hanging back pad with 6" vertical channel stitching
- Tightly upholstered seat
- Upholstered seat support
- Upholstery: Architex English Leather, Nuance



Booth with Hanging Back Pad



- Inside back: tight cushion style with self welt and “wings”
- Tightly upholstered seat cushion
- Inside back and seat upholstery: Unika Vaev Champ, Salty
- Seat wing, outside back, and vertical panels below seat upholstery: Pallas Textiles Donegal Plain, Pearlescent
- Wood legs
- Custom stain match



Custom Settee



Photo: Washington Hilton, <https://finturli.com/vz9y58v>



Custom Settee | Banquette



Photo: Washington Hilton, <https://rhyul.com/yzy58wvc>



Custom Settee | Banquette



- Laminate back frame, crumb wipe, and kickbase; Wilsonart English Oak
- 6" vertical channel stitching on inside back
- Tightly upholstered seat
- Upholstered seat support
- Upholstery: Tri-Kes Regal, Blue Ribbon
- Matching wall panel



Booths with Wall Panel



- Laminate back frame, crumb wipe, and kickbase; Wilsonart English Oak
- 6" vertical channel stitching on inside back
- Tightly upholstered seat
- Upholstered seat support
- Upholstery: Tri-Kes Regal, Blue Ribbon



Booths with Wall Panel, Side Detail



Photo: Washington Hilton, <https://triviat.com/vc92938vc>



Custom Settee | Booth with Wall Panel

- Wood frame under seat; upholstered base
- Upholstery: Jamie Stern DRW-07, Dream



Ottoman



- Sewn-in biscuit tufting on inside back
- Removable seat
- Laminate top cap, frame, and finished outside back
- Laminate: Wilsonart Madagascar,
- Wood legs
- Upholstery: Architex McQueen, Silver Dollar



Banquette with Biscuit Tufting, Two-Seat



- Fully upholstered
- Back and seat are tight-cushion style with accent welt
- Upholstery: Architex English Suede, Beluga
- Laminate kickbase



Wing-Back Banquette



- 8" vertical channel tufting on inside back
- Upholstery: Opuzen Hopper, Commodore
- Laminate sides, outside back, and kickbase; Wilsonart English Oak

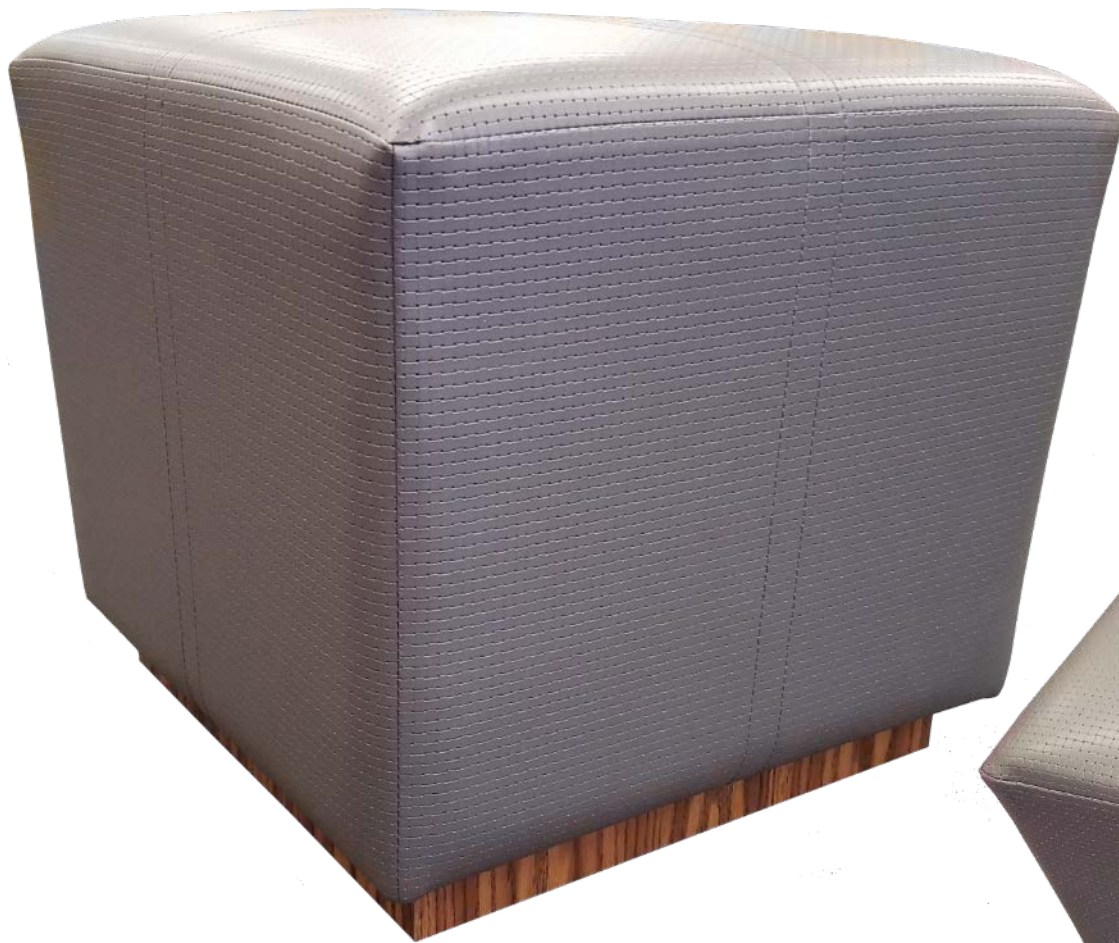


Banquette with Vertical Channel Tufting

- Wood veneer end caps and decking
- 6" vertical channel stitching on inside back
- Laminate kickbase; Wilsonart English Oak



Double U-Shaped Booth



- High density foam wrapped with heat bonded polyester fiber batt for crown and softness
- Laminate kickbase
- Laminate: Wilsonart English Oak
- Upholstery: HBF Textiles Embossed Woven, Briefcase Grey
- Decorative stitching in X-pattern on top, extends down the sides



Cube Ottoman with X-Stitching



- Solid maple and wood veneer construction
- Attached seat cushion
- Upholstery: Designtex Interlock, Rose
- Kickbase wrapped with black polyvinyl



Maine Booth



Photo: Sub Station II, www.facebook.com/pg/substationilexington/photos



Maine Booth



- Back cushions: High-density foam
- Seat cushions: High-density polyurethane foam; no springs
- Upholstery: Designtex 3249-103, Peppercorn
- Foam / fill are "FR" fire retardant and comply with California technical bulletin #117-2013



Custom Cushions for Z-Shaped Banquette



- Sofa-style booth
- Sewn biscuit-tufted inside back
- Inside back upholstery: Robert Allen Exquisite, Jet (light side)
- Seat upholstery: Duralee Log, Coal
- Ash legs
- Stain color: Custom



Leg detail



Straight Banquette



Straight Banquette



- Sofa-style booth
- Sewn biscuit-tufted inside back
- Inside back upholstery: Robert Allen Exquisite, Jet (light side)
- Seat upholstery: Duralee Log, Coal
- Ash legs
- Stain color: Custom



Corner Banquette



Photo: Soft Touch Furniture



Corner Banquette



- Wing-back style
- Biscuit-tufted inside back
- Inside back upholstery: United Lafayette, Rock
- Seat upholstery: Greenhouse A3920 Magnetite
- Ash legs
- Stain color: Custom



Diamond-Tufted Banquette



Photo: Scott Leitch/Entrapure



Diamond-Tufted Banquette | Distressed Ash Tabletops



- Fully upholstered
- Padded side caps
- Removable seat
- Inside back upholstery: Pollack Knot Tonight, River
- Seat upholstery: Mayer Caressa, Black
- Kickbase wrapped with black polyvinyl





- Heavy-duty furniture-grade engineered wood frame
- Top cap and side caps are padded to ensure comfort and a well-tailored shape
- Removable seat
- Inside back and seat upholstery: Naugahyde Spirit Millennium, Black
- Seat support, top cap and side caps, and welting upholstery: Naugahyde Spirit millennium, Tomato
- Kickbase wrapped with black polyvinyl



Double Adams Booth

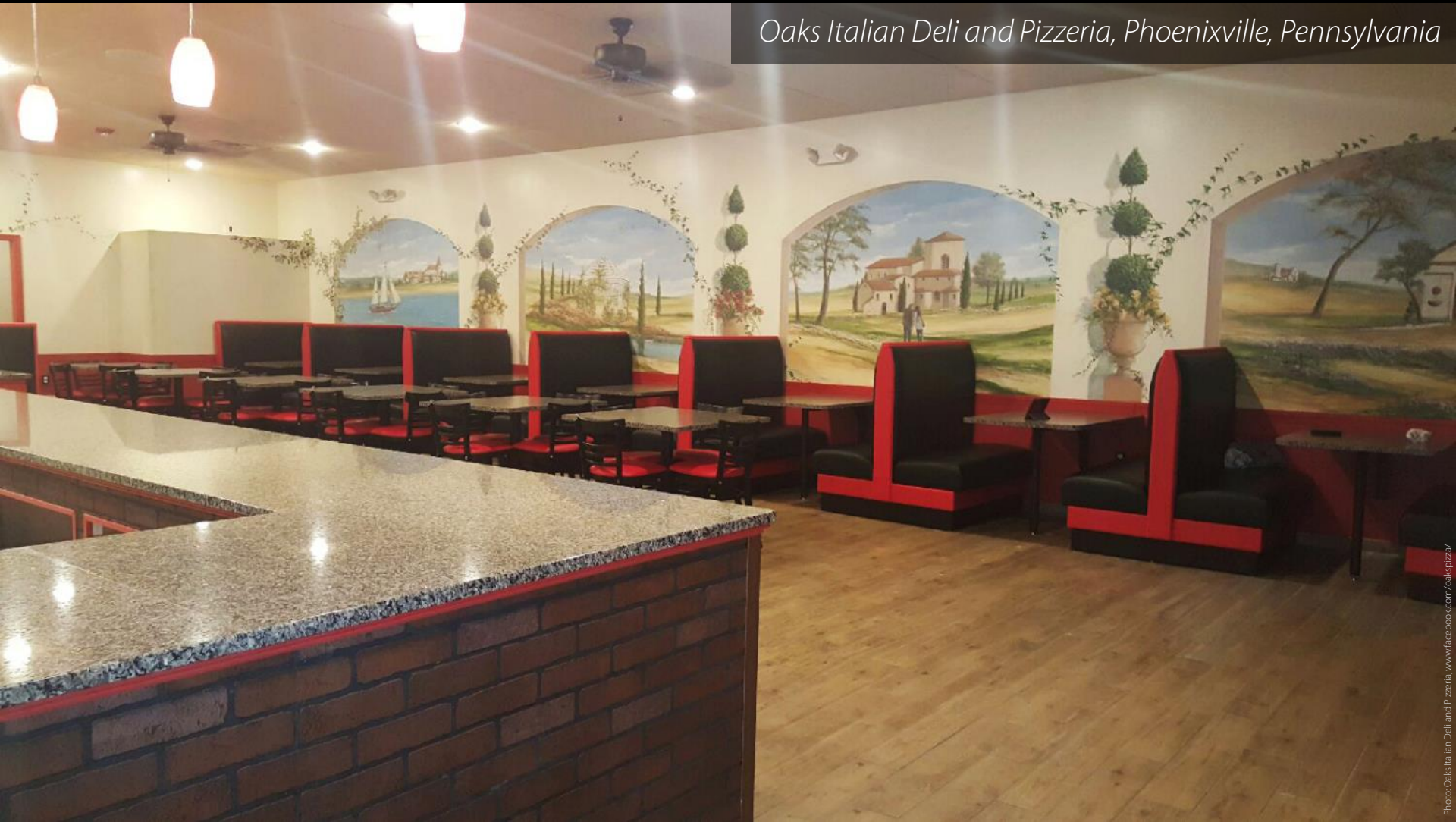


Photo: Oaks Italian Deli and Pizzeria, www.facebook.com/oakspizza/





- Hanging back pad
- Back upholstery: Designtex Round Leaves, Hydrangea
- Seat upholstery: Designtex: Ludington, Walnut
- Wood legs with recessed kickbase wrapped with black polyvinyl



L-Shaped Booth



- Sofa style booth
- Fully upholstered
- Removable seat:
- Inside back upholstery: Arc-Com Gatsby, Onyx
- Seat upholstery: Arc-Com Rodeo, Onyx
- 4¼" high maple legs



Topeka Booth



Photo: Michelle Pemberton/InkyStar.com/https://i.imgur.com/99baaez





Topeka Booth



Photo: Michelle Pemberton/InkyStar, <https://i.imgur.com/98aaez>



Topeka Booth



- Fully upholstered
- Padded top cap and side caps
- Diamond-tufted inside back
- Upholstery: Symphony Glaze, Brunette
- Kickbase wrapped with black polyvinyl



Hex Booth



Photo: TFS Design Group



Hex Booth | Red Oak Tabletops



- Walnut top cap and crumb wipe
- Stain color: Natural
- Custom tufting on inside back
- Drop-front seat
- Back upholstery: United Lush, Chartreuse
- Seat upholstery: United Poison, Havana



Banquette with Custom Tufting



- Fully upholstered
- Diamond-tufted inside back
- Finished outside back
- Removable Seat
- Upholstery: Culp Cantina, Cranberry
- Kickbase wrapped with black polyvinyl



Hex Booth, U-Shaped



- White oak top cap, side caps, and seat support
- Removable seat
- Stain color: Natural
- Kickbase wrapped with black polyvinyl



Adams Booth



- Fully upholstered
- One-piece arm/side cap
- Decorative buttons on inside back
- Metal kickbase





- Walnut top cap, side caps, crumb wipe, seat support, and finished outside back
- Stain color:
- Hanging back pad
- Open base with tapered wood legs



- Welded square steel tubing frame
- Black powder coat finish



Metal Frame Booth





- Fully upholstered
- Blind tufting on inside back
- Finished outside back
- Upholstery: Jamie Stern Bernini, Lighthouse
- Open base with tapered maple legs



Quarter Round Booth



- Fully upholstered, with padded top cap and side caps
- Removable seat
- Upholstery: Arc Com Rodeo, Onyx
- Kickbase wrapped with black polyvinyl



Adams Banquette



- Fully upholstered; fabric rolled over top and sides
- Button tufting on inside back
- Removable seat
- Back upholstery: Greenhouse Performance Velvet, Granite
- Seat upholstery: Chamea II, Graphite Grey
- Kickbase wrapped with grey polyvinyl



Fairfield Banquette



- Fully upholstered
- Smooth inside back
- Back upholstery: Morbern Wave, Topaz Mist
- Seat upholstery: Spradling Silvertex, Mocha
- Maple legs
- Stain color: Perfect Brown



Jersey Booth



- Fully upholstered
- Smooth inside back
- Back upholstery: Mayer Arabesque, Platinum
- Seat upholstery: Spradling Silvertex, Mocha
- Maple legs
- Stain color: Perfect Brown



Jersey Booth



- Fully upholstered
- Smooth inside back
- Upholstery: Spradling Silvertex, Mocha
- Upholstery: Nassimi Monroe, Penny
- Maple legs
- Stain color: Perfect Brown



Vineland Ottoman

- Solid wood and wood veneer construction
- Wood species: Birch
- Removable padded seat
- Kickbase wrapped with black polyvinyl



Wood Banquette





Photo: Soft Touch Furniture



Wood Banquette



- Plain inside back
- Removable seat
- Inside back upholstery: Wolf Gordon Malta, 802.09
- Seat upholstery: Wolf Gordon Whistler, Brown Sugar
- Oak top cap, side caps, and one-piece seat support/kickbase



Single and Double Booth



- Smooth inside back; finished outside back
- Low-profile seat
- Inside back upholstery: Culp Bunnyhop, Chrome
- Seat, seat support, top cap, side caps, and outside back upholstery: Culp Cantina, Black
- 8" maple legs



Adams Booth



- Fully upholstered; fabric rolled over top and sides
- Plain inside back
- Removable drop-front seat
- Maple kickbase



Topeka Booth



- Fully upholstered with fully upholstered arms
- Diamond-tufted inside back
- Brass nailhead trim
- Wood bun feet in maple with recessed kickbase
- Stain color: Perfect Brown

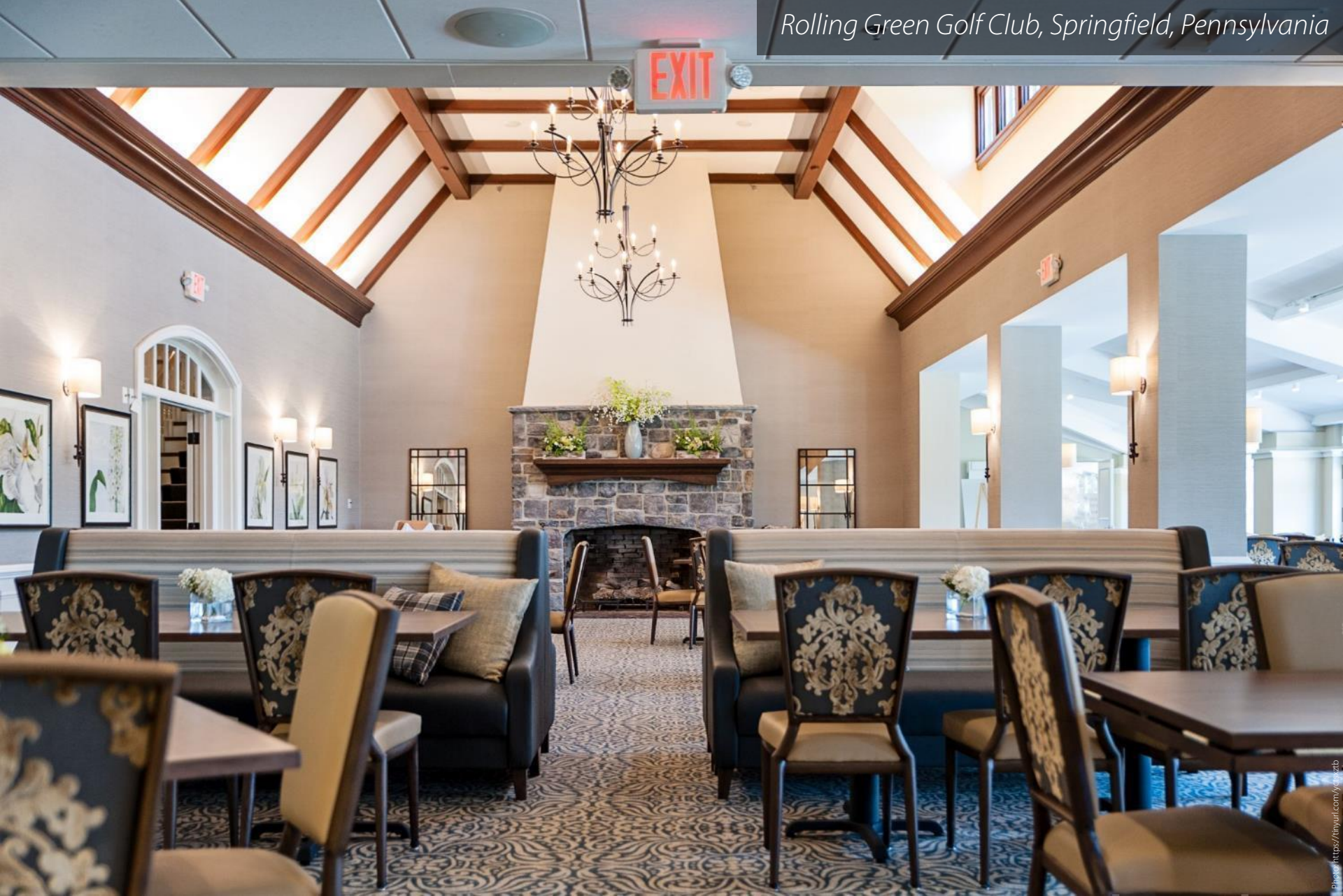




- Sofa-style booth
- Fully upholstered
- Smooth inside back
- Maple legs
- Stain color: Perfect Brown



Chambers Booth



Chambers Booth



- Maple beadboard
- Stain color; Mahogany
- Hanging back cushions with accent rope and bracket; decorative button in center of each back pad
- Back upholstery: Luxury 45167, Cordovan
- Seat upholstery: Culp Cantina, Saddle
- Kickbase wrapped with black polyvinyl



Jay Booth



- Maple top cap and side caps
- Stain color: Mahogany
- Diamond-tufted inside back
- Back upholstery: Luxury 45167, Cordovan
- Seat upholstery: Culp Cantina, Saddle
- Kickbase wrapped with black polyvinyl



Fairmont Booth



- Steel and wood frame construction
- Upholstery: Momentum Row, Shale
- 12" high 1½" thick steel legs
- Powder coat color: TCI Circuit Grey
- Plastic floor glides



Metal-Base Booth



Photo: Soft Touch Furniture

Metal-Base Booth



- Solid maple, wood veneer, and plywood construction
- Horizontal slats on inside back
- Stain color: Colonial Maple



Double and Single Wood Booth

- Solid maple, wood veneer, and plywood construction
- Horizontal slats on inside back
- Stain color: Colonial Maple
- 2" thick upholstered seat cushion
- Upholstery: Wolf Gordon Furka Plus, Dark Red



Wood Banquette



- Biscuit-tufted inside back
- High-density foam seat
- Inside back upholstery: Mayer
Cosmopolitan, Marigold
- Seat and seat support
upholstery: Wolf Gordon
Cordova, Kiwi
- Maple top cap and side caps
- Stain color: Colonial Maple
- Wood kickbase



Eldorado Booth



- Removable seat
- Upholstery: Wolf Gordon Cordova, Mango
- Maple top cap, side caps, and decking
- Stain color: Colonial Maple
- Wood kickbase



Half-Circle Booths



- Maple top and sides
- Drop-front removable seat
- Seat upholstery: Mayer Caressa, Java
- Kickbase wrapped with carpet



Framingham Booth



- Maple top and sides
- Drop-front removable seat
- Seat upholstery: Mayer Caressa, Java
- Kickbase wrapped with carpet



Curved-Back Booth

- Blind biscuit-tufted seat
- Maple frame and tapered legs
- Stain color: Walnut



Tufting
Detail



Bench



Photo: Soft Touch Furniture



Bench



- Smooth inside back with headroll
- Maple back, seat, and seat support
- Stain color: Natural
- Kickbase wrapped with black polyvinyl



Banquette



Photo: Crazy Bowls and Wraps, www.facebook.com/gg/crazybowlsandwraps/photos/



Banquette



- Top cap, side caps, crumb wipe, and seat support: Maple
- Smooth inside back
- Removable seat
- Upholstery: Culp Cantina, Cocoa
- Kickbase wrapped with black polyvinyl



Preston Booth



- Upholstery rolled over top and side
- Removable drop-front seat
- Back upholstery: Stinson Revolver, Angie
- Seat upholstery: Kravet Seismic, Amalfi
- Powder-coated metal kickbase





- Smooth inside back
- High-density foam seat
- Upholstery: C.F. Stinson Sundance, Cider
- 1½" square metal legs
- Powder coat color: Black
- Finished outside back in wood (maple)





- Smooth inside back
- High-density foam seat
- Upholstery: Ultrafabrics
Ultraleather Linen, Black
Diamond
- 1½" square metal legs
- Powder coat color: Black
- Combination electrical/USB
outlets built into seat



Outlet Detail



Banquette



Photo: Google Maps, user Michael Grimm, <https://myurl.com/jm7img>



Booths and Banquettes



- Smooth inside back
- Removable seat
- Upholstery: Arc Com Omega, Chestnut
- Maple top cap, side caps, and seat support
- Stain color: Natural
- Combination electrical/USB outlets built into seat supports



Outlet Detail



Banquette



Photo: Bagels and Grinds, <https://myurl.com/xyzjvml>



Banquette



Leg Detail



- Diamond-tufted inside back
- High-density foam seat
- Upholstery: United Fabrics
Glaze, Honey
- Brass nailhead trim on wings
- Turned wood legs



Camel-Back Booth



Top Detail

- Diamond-tufted inside back
- High-density foam seat
- Upholstery: United Fabrics Glaze, Honey
- Deeply recessed kickbase covered with brown polyvinyl
- Wood top decking with grommets for lamps



30' Double-Sided Banquette



Photo: Rey Lopez, Eater DC. <https://nytul.com/yaobozh>



30' Double-Sided Banquette | Mixed-Species Tables

Succotash, Washington, D.C.



Photo: David Grayson / Eater DC | www.eater.com



Camel-Back Booths | Mixed-Species Tables



- Inside back with vertical channels
- Drop-front seat
- One-piece arm and side cap
- Inside back upholstery: Fabricut Luminary , Meringue
- Seat and side cap upholstery: Kravet Napa, Mink
- Kickbase wrapped in Numetal, Brushed Brass



Double Booth



- Inside back with vertical channels
- Drop-front seat
- One-piece arm and side cap
- Finished outside back
- Inside back and back upholstery: Fabricut Luminary, Meringue
- Seat and side cap upholstery: Kravet Napa, Mink
- Kickbase wrapped in Numetal, Brushed Brass



Single Booth



Single and Double Booths

- Diamond-tufted inside back
- One-piece arm and side cap
- Finished outside back
- Upholstery: Brentano Atelier, Peacock Plume
- Tapered wood feet; walnut stain



Diamond-Tufted U-Booth

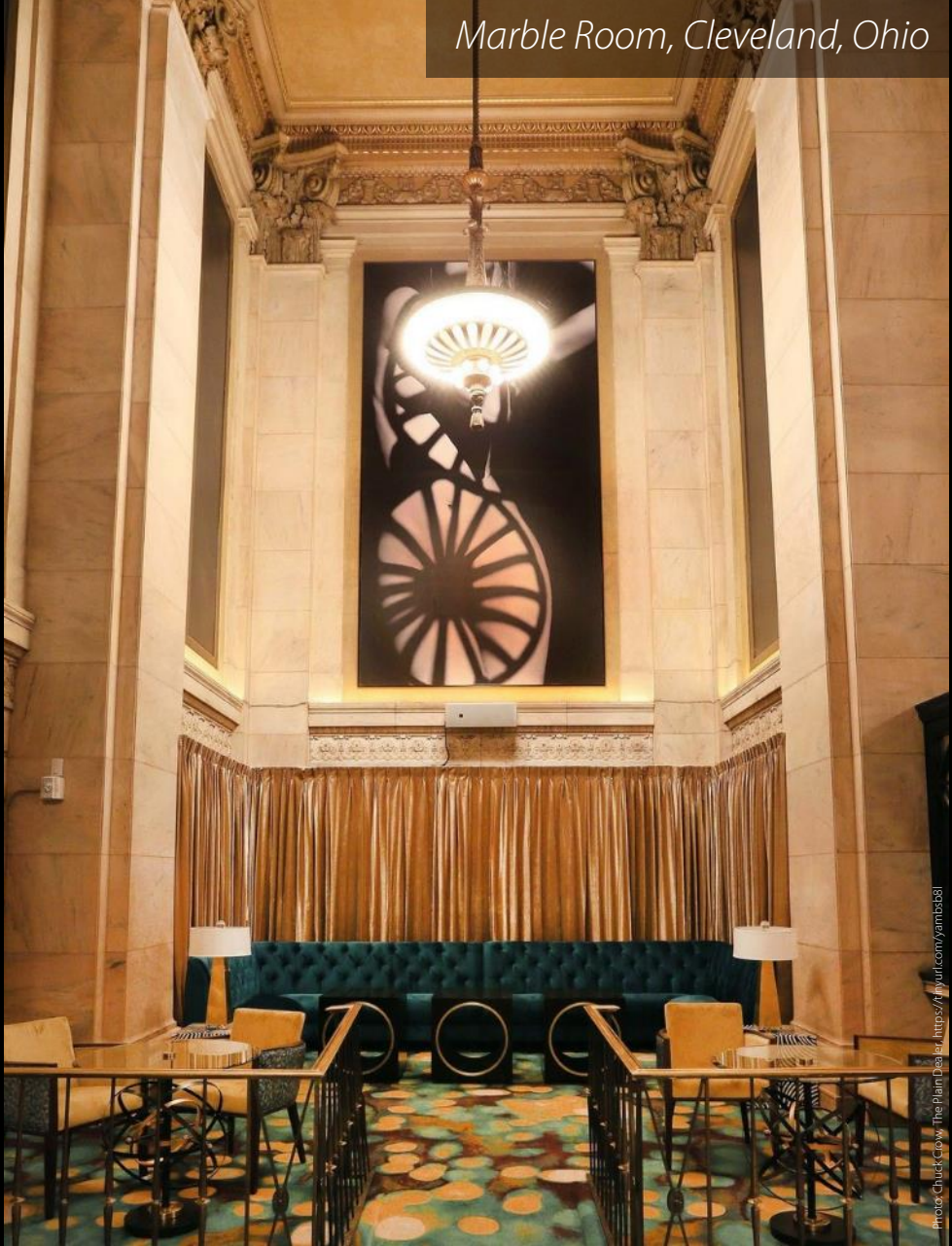


Photo: Chuck Crow, The Plain Dealer, <https://nyurl.com/yamb581>



Diamond-Tufted U-Booth



Photo: Chuck Crow, The Plain Dealer, <https://nyuif.com/yambis81>



Diamond-Tufted U-Booth



- Channel-tufted inside back
- One-piece arm and side cap
- Upholstery: Brentano Atelier, Peacock Plume
- Kickbase wrapped in Numetal, Brushed Brass



Channel-Tufted U-Booth



Photo: Soft Touch Furniture



Channel-Tufted U-Booth

Marble Room, Cleveland, Ohio

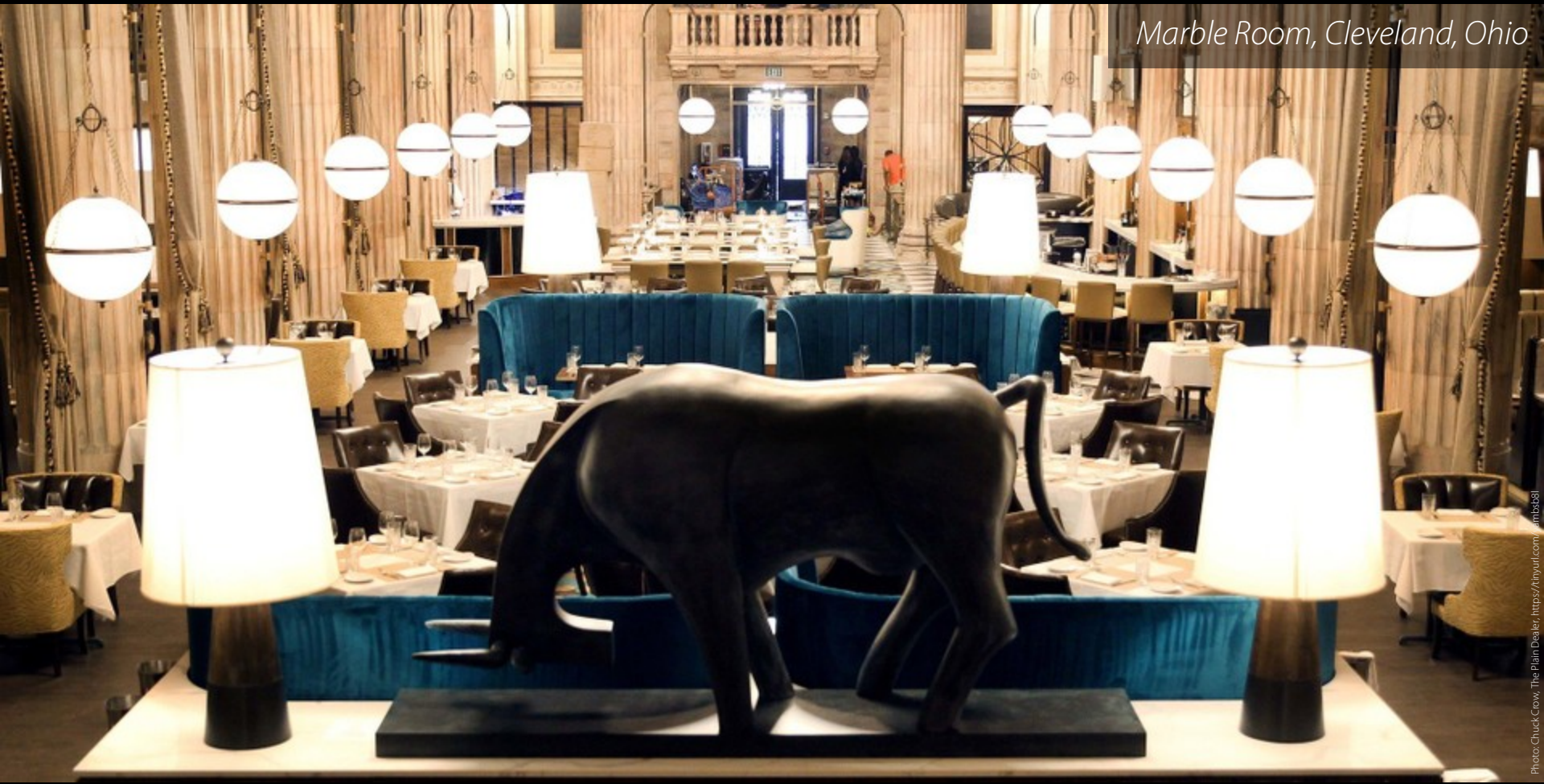


Photo: Chuck Crow, The Plain Dealer, <https://nyuurl.com/amb4381>



Channel-Tufted U-Booth

- Diamond-tufted inside back
- Upholstery rolled over top
- Removable seat
- Upholstery: Fabricut Opaque, Chocolate
- Nailhead trip around end caps and seat support
- Tapered wood legs



Round Three-Quarter Booth



- Blink biscuit-tufted inside back pad
- Drop-front removable seat
- Upholstery: Culp Cantina, Quarry
- Maple top cap and side caps
- Privacy panel on one end
- Kickbase wrapped with black polyvinyl



Opposite End Detail



Apollo Double Banquette



- White oak and plywood construction
- Stain color: Natural
- Hanging back pad
- Kickbase wrapped with black polyvinyl



Single Booth



Photo: Smoke the Burger Joint, www.facebook.com/dgr.SmokeTheBurgerJoint/photos/



Single Booth | Mixed-Species Tables



Photo Credit: The Burger Joint, www.wildcatbook.com/rpr/5mg TheBurgerJoint/photos/



Single Booth | Mixed-Species Tables



- Upholstery rolled over top and sides
- Back upholstery: Loomsource Akimbo, Zinc
- Removable seat
- Seat upholstery: Burch Aura, Espresso
- One-piece oak seat support



Roosevelt Booth



Photo: 44 Walnut, www.facebook.com/424-Walnut-59586267348571/photos/



Roosevelt Booth | Ash Tabletops



- Upholstery rolled over top and sides
- Custom tufting design on inside back
- Removable seat with tempered steel springs
- Maple tapered legs
- Recessed kickbase wrapped with black polyvinyl





Photo: Soft Touch Furniture



Atlanta Booth



- Sofa-style booth with laminate surround
- Laminate: Wilsonart, Studio Teak
- Blind biscuit-tufted inside back
- Removable seat
- Upholstery: Scott Fabrics
Bottle Rocket, Honey



Sofa-Style Booth



- Double-sided sofa booth with laminate arms
- Laminate: Wilsonart, Studio Teak
- Blind biscuit-tufted inside back
- Removable seat
- Back upholstery: Scott Fabrics Fuzzy, Slurpee
- Seat upholstery: Trikes Crown Jewel, Indigo
- Metal frame and legs with powder-coat finish
- Combination electrical/USB outlets built in to arms



Outlet Detail



Double-Sided Sofa



- Maple top cap, side caps, back, and seat support
- Hanging back pad
- Foam seat
- Upholstery: Naugahyde Dolphin, Blackwatch
- Kickbase wrapped with black polyvinyl



Bigham Double Booth

- Maple top cap, side caps, back, and seat support
- Hanging back pad
- Foam seat
- Upholstery: Naugahyde Dolphin, Blackwatch
- Kickbase wrapped with black polyvinyl



Bigham U-Booth



Bigham Double Booth



- Wood top cap, side caps, and divider
- Diamond-tufted inside back
- Removable seat
- Upholstery: Naugahyde Chamea II, Black
- Kickbase covered with black polyvinyl



Hex Double Booth



- Smooth inside back
- High-density foam seat
- Upholstery: Culp Cantina, Saddle
- Oak legs with cherry stain



Upholstered Chair



- Channel-tufted inside back
- Removable drop-front seat with steel springs
- Inside back upholstery: Momentum Pace Incase, Jute
- Seat and finished outside back upholstery: KB Contract Cheyenne, Bison
- Red oak kickbase



U-Shaped Banquette

- Diamond-tufted inside back
- Removable drop-front seat with steel springs
- Upholstery: KB Contract
Cheyenne, Bison
- Red oak kickbase



U-Booth



Photo: Michelle Pemberton, Indy Star, <https://indy.1st.com/ydcwlp18>



Multi-Section Curved Banquette with Decking



- Smooth inside back
- Drop-front seat
- Back upholstery: Opuzen Noemi, Citron
- Seat upholstery: Architex English Leather, Dark Room
- Kickbase wrapped with black polyvinyl



S-Curve Banquette



- Smooth inside back
- Drop-front seat
- Back upholstery: Teknion Substance Memo, Lodestone
- Seat upholstery: Architex English Leather, Dark Room
- Kickbase wrapped with black polyvinyl
- Combination electrical/USB outlets built into kickbase



Curved Banquette



- Smooth inside back
- Drop-front seat
- Back upholstery: Opuzen Malibu Waves, Ephesus
- Seat upholstery: Architex English Leather, Dark Room
- Kickbase wrapped with black polyvinyl



Lounge Banquette



- Blind biscuit tufting on inside back
- Drop-front seat
- Back upholstery: Opuzen Key Largo, Storm
- Seat upholstery: Architex English Leather, Dark Room
- Wood crumb wipe
- Stain color: Black
- Kickbase wrapped with black polyvinyl



Dining Banquette



- Oak top cap, side caps, seat support, legs, and outside back
- Stain color: Walnut
- Hanging back pad
- Removable seat
- Back upholstery: Loomsource Finale, Capri
- Seat upholstery: GMF Neptune, Marine



Preston Booth

- Oak top cap, side caps, seat support, legs, and outside back
- Stain color: Walnut
- Hanging back pad
- Removable seat
- Back upholstery: Loomsource Finale, Capri
- Seat upholstery: GMF Neptune, Marine



Snug Booths with Decking



- Oak seat support and legs
- Stain color: Walnut
- Seat upholstery: GMF Neptune, Marine



Curved Bench

- Smooth inside backs
- High-density foam seats
- Walls: Wood veneer with custom stain
- Kickbase wrapped with black polyvinyl



Sectional Sofa





- Smooth inside back
- Removable drop-front seat
- Back upholstery: P. Kaufmann Samarkand, Peacock
- Seat upholstery: Charlotte 7187 Buff
- Maple seat support and tapered legs
- Stain color: Skyline Walnut



Sofa Booth

- Channel-tufted inside back
- Removable seat
- Upholstered arms
- Red oak plinth



Banquette



Photo: Rize, <https://www.facebook.com/rizerestaurant/>



Banquette



Photo: Rize, <https://www.facebook.com/rizebarand>



Banquette



- Red oak top cap, side cap, seat support, and legs
- Stain color: Custom
- Smooth inside back
- Removable seat with steel springs



Single and Double Booth



- Maple back, finished outside back, and seat support
- Removable seat with steel springs
- Upholstery: Culp Cantina, Magnetite
- Kickbase wrapped with black polyvinyl



Single Bigham Booth



Double Bigham Booth



- Plain inside back
- Removable seat with steel springs
- Upholstered top cap and side caps
- Kickbase wrapped with black polyvinyl



Adams Booth

- Smooth inside back
- Foam seat
- Inside back upholstery: Burch Refresh, Smoke
- Seat upholstery: Burch Refresh, Coffee
- Square maple legs



U-Booth

- Smooth inside back
- Foam seat
- Inside back upholstery: Burch Refresh, Smoke
- Seat upholstery: Burch Refresh, Coffee
- Square maple legs



Sinatra Booth

- Maple back and seat support
- Stain color: Colonial Maple
- Planks running horizontally
- High-density foam seat
- Upholstery: GMF Silky, Reef
- Kickbase: Black metal



Moby Banquette



- Button-tufted inside back
- Removable seat
- Upholstered seat support/kickbase
- Upholstery: Culp Cantina, Cranberry



Fairfield Banquette





- Sewn biscuit-tufted inside back
- Drop-front seat
- Upholstery: Culp Cantina, Black
- Top cap and side caps: Maple
- Stain color: Black
- Kickbase wrapped with black polyvinyl



Apollo Booth



Apollo Booth

- Biscuit-tufted inside back
- High-density foam seat
- Upholstery: Culp Cantina, Cranberry
- Maple top cap, side caps, and kickbase
- Stain color: black



Photo: Benchmark Restaurant, www.yelp.com/biz/benchmarkrestaurant-perrysburg



Eldorado Booth



- Vertical channel tufting
- Removable seat
- Upholstery: Naugaleather, Black
- Maple top cap and side caps
- Kickbase wrapped with black polyvinyl



Double and Single Booth



- Diamond-tufted back
- High-density foam seat
- Back upholstery: Maharam Milestone, Basil
- Seat upholstery: Abescon Twirl, Eucalyptus
- Laminate top cap and seat support
- Kickbase wrapped with black polyvinyl



Luna Rotunda Banquette



- Smooth inside back
- Upholstery rolled over top and sides
- Drop-front seat
- Back upholstery: Stinson Casablanca, Autumn
- Seat upholstery: Maharam Compound, Mountainside
- Kickbase wrapped with black polyvinyl



Atlanta Banquette



- Upholstery rolled over top and sides
- Decorative buttons
- Back upholstery: Greenhouse B1552, Moonbeam
- Seat upholstery: Culp Castillo, Steel
- Maple tapered legs



Sofa-Style Booth



- Smooth inside back
- Upholstered top cap and side caps
- Drop-front seat
- Upholstery: Culp Bravo, Ash
- Kickbase wrapped with black polyvinyl



Clearwater Banquette



Photo: Model Home Interiors



Clearwater Banquette



- Diamond-tufted hanging back pad
- High-density foam seat
- Upholstery: Culp Cantina, Putty
- Maple back, top cap, side caps, and seat support
- Stain color: Perfect Brown
- Kickbase wrapped with black polyvinyl



Bigham Booth, Double and Single

- High-density foam seat with diamond tufting
- Upholstery: Culp Cantina, Putty
- Maple frame and legs
- Stain color: Perfect Brown



Winfield Bench

- Hanging back pad with diamond tufting
- High-density foam seat
- Upholstery: Burch Verve, Angora
- Maple top cap, side caps, and seat support
- Stain color: White
- Decorative molding on sides of seat
- Combination electrical/USB outlet built into seat support



Half-Circle Banquette





- Smooth inside back
- Removable seat
- Upholstery: Culp Cantina, Magnetite
- Maple top cap, side caps, seat support, and crumb wipe
- Stain color: Light Black
- 1" square metal legs



Rochester Booth



- Smooth inside back with upholstery rolled over top and sides
- High-density foam seat
- Back upholstery: Fabricut Palermo, Night
- Seat upholstery: Wolf Gordon Brennan, Cabo
- Tapered maple legs



Curved Banquette



- Smooth inside back
- High-density foam seat
- Upholstery: HBF Crew Cut, Black Pearl
- Tapered maple legs



Love Seat



- High-density foam back and seat
- Upholstery: Swavelle Nevina, Golden Brown
- Laminate seat support and kickbase
- Laminate: Lab Designs, Lancaster Wood



L-Banquette

- High-density foam seat
- Upholstery: Maharam Lariat, Yam
- Welded metal base
- Powder coat color: Black



Waiting Bench





- Smooth inside back with loose accent pillows
- Back and pillow upholstery: Brentano Savoy, Constellation
- Seat with steel springs
- Seat upholstery: P. Kaufmann, Primary Element, Midnight
- Ash back supports, seat support, and legs



Modern Sofa



- Wood back with snap-on pillows in fabric with leather tab
- Seat with steel springs
- Back, top rail, seat support, and kickbase in white oak
- Custom stain



L-Banquettes



- Upholstered back and seat with square-pattern stitching detail
- High-density foam seat
- Upholstery: Fabricut Oxley, Evening
- White oak seat support and kickbase



Sofa Banquette



- Smooth inside back with leather belt detail
- Removable seat with steel springs
- Upholstery: Opuzen Essex, Chutney
- Belt detail upholstery: Moore & Giles Renaissance, Cuero
- White oak kickbase
- Custom stain color



Chair and U-Banquette



- Smooth inside back
- Back upholstery: Nassimi Esprit, American Beauty
- Removable seat with springs
- Seat upholstery: Nassimi Esprit, Dove
- Maple top cap, side caps, crumb wipe, and seat support
- Stain color: Custom
- Kickbase wrapped with black polyvinyl



Preston Single and Double Booths



- High-density foam seat
- Upholstery: Nassimi Esprit, American Beauty
- Maple seat support
- Stain color: Custom
- Kickbase wrapped with black polyvinyl



Washington Waiting Bench



- Smooth inside back
- Removable seat with steel springs
- Orange booth:
 - Back upholstery: Momentum Audubon, Daylily
 - Top cap, side caps, seat, crumb wipe, and seat support upholstery: Architex Voila, Pumpkin
- Gray booth:
 - Back upholstery: Brentano DIY, Inkwel
 - Top cap, side caps, seat, crumb wipe, and seat support upholstery: Naugahyde Neochrome, Black
- Kickbase wrapped with black polyvinyl





- Smooth inside back with attached cushions
- High-density foam seat
- Upholstery: Culp Cantina, Quarry
- Metal frame and legs
- Powder coat color: Matte chrome



L-Shaped Sofa

- Smooth inside back
- High-density foam seat
- Upholstery: Culp Cantina, Peanut
- Kikbase: Walnut



Loveseat



- Diamond-tufted inside back and seat
- Chesterfield-style back roll
- High-density foam seat
- Metal frame and legs
- Powder coat color: Matte chrome



Armless Loveseat



- Diamond-tufted inside back and seat
- High-density foam seat
- Metal frame and legs
- Powder coat color: Matte chrome



Armless Loveseat

- Smooth inside back
- High-density foam seat
- Upholstery: Nassimi
Symphony Glaze, Regatta
- Wood seat support and legs
- Stain color: Aged Oak, Grey



Sofa



- Smooth inside back
- High-density foam seat
- Upholstery: Nassimi
Symphony Glaze, Regatta
- Wood seat support and legs
- Stain color: Aged Oak, Grey



Sofa



- Smooth inside back
- High-density foam seat
- Upholstery: Culp Gunslinger, Saddle
- Walnut frame
- Stain color: Natural



Square Chair



- Blind biscuit-tufted inside back
- High-density foam seat with blind biscuit tufting
- Upholstery: Culp Gunslinger, Saddle
- Walnut frame
- Stain color: Natural



Wing-Back Chair



- Smooth inside back
- Back upholstery: Arc Com Metro, Mineral
- Removable seat with steel springs
- Seat upholstery: Culp Cantina, Peanut
- Maple seat support and legs
- Stain color: Perfect Brown



Dublin Banquette



- Plain inside back; tapered foam cushion
- Back upholstery: Knoll Totem, Opal
- High-density foam seat
- Seat upholstery: Arc Com Dynasty, Mushroom
- Laminate seat support, side caps, and top cap
- Kickbase wrapped with black polyvinyl



Banquette



- Vertical-channel-tufted inside back
- Back upholstery: Opuzen Panorama, Lapis
- Removable seat with steel springs
- Seat upholstery: Architex Mammoth, Extinct
- Maple top cap, side caps, seat support, and kickbase



Banquette



- Diamond-tufted inside back
- High-density foam drop-front seat
- Upholstery: Architex Born And Bred, Clarkson
- Wood top cap and side caps
- Stain color: Black
- Kickbase wrapped with black polyvinyl



Banquette



- Diamond-tufted inside back
- High-density foam drop-front seat
- Upholstery: Architex Born And Bred, Clarkson
- Wood top cap and side caps
- Stain color: Black
- Kickbase wrapped with black polyvinyl



Curved Banquette



- Diamond-tufted inside back
- High-density foam drop-front seat
- Upholstery: Designtex Fuse, Titanium; Designtex Fuse, Steel
- Wood top cap and side caps
- Stain color: Black
- Metal legs
- Powder coat color: Black



U-Booths



- Diamond-tufted inside back
- High-density foam drop-front seat
- Upholstery: Designtex Fuse, Oxide
- Wood top cap and side caps
- Stain color: Black
- Kickbase wrapped with black polyvinyl



Loveseat

- Upholstery: Architex Born and Bred, Clarkson
- Kickbase wrapped with black polyvinyl



Ottoman