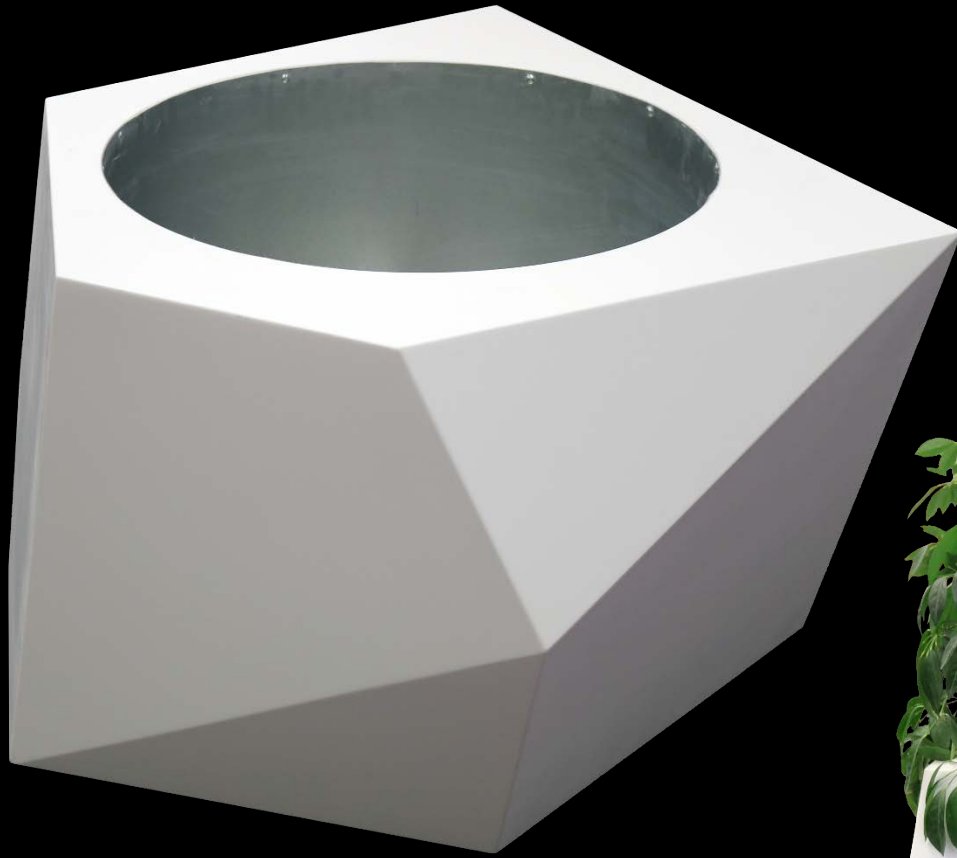




SOFT TOUCH  
FURNITURE

# Millwork

- Solid surface exterior with galvanized liner



Geometric Planter

- Sinuous shape
- Covered with Synlawn Play artificial grass



## Freeform Lounger





Photo: Soft Touch Furniture



## Geometric Planters and Freeform Lounger



*Giant Eagle, Youngstown, Ohio*

- Laminate top with 12" overhang
- Laminate: Wilsonart Milano Mahogany

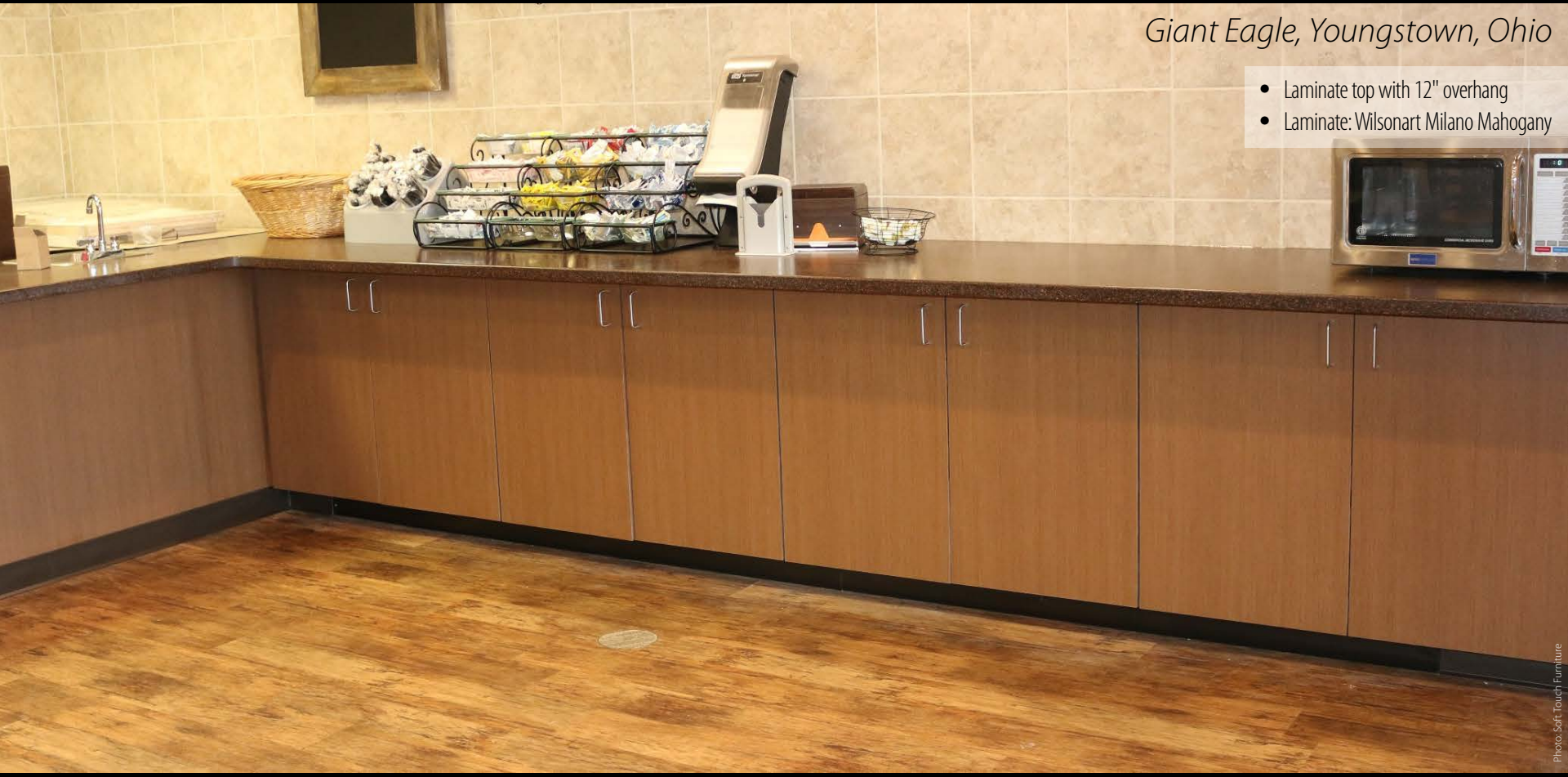


Photo: Soft Touch Furniture



Counter

- Custom etching



Menu Holder, Napkin Holder, and Receipt Folder Box



- Built to customer's specifications
- Decorative laminate
- Thermo-fused melamine interior
- Solid walnut cross on front of cabinet
- Built in sections



## Greeting Station



- Solid surface top, front, and sides
- Laminate back, including doors and drawers
- Adjustable shelves
- Two glass cases





- Oak construction
- Stain color: M.L. Campbell, Coffee Bean



Service Station

- Oak construction
- Stain color: M.L. Campbell, Coffee Bean





- Oak construction
- Stain color: M.L. Campbell, Coffee Bean



## Service Station



- Oak construction
- Stain color: M.L. Campbell, Coffee Bean



Reception Desk



- Laminate: Wilsonart Warehouse Oak



Cabinet with Lock



- Case tops, bottoms, and partitions: 3/4" plywood construction
- Doors, drawer fronts, and shelves: 3/4" particleboard construction
- Flush overlay doors with concealed, self-closing hinges
- Laminate top: Formica Brazilian Granite with radius corners and black T-mold edge



Cabinet with Drawer Unit





- Case tops, bottoms, and partitions: 3/4" plywood construction
- Doors, drawer fronts, and shelves: 3/4" particleboard construction
- Flush overlay doors with concealed, self-closing hinges
- Laminate top: Formica Brazilian Granite with radius corners and black T-mold edge



Cabinet with Drawer Unit



- Case tops, bottoms, and partitions:  $\frac{3}{4}$ " plywood construction
- Doors, drawer fronts, and shelves:  $\frac{3}{4}$ " particleboard construction
- Flush overlay doors with concealed, self-closing hinges
- Laminate top: Formica Brazilian Granite with radius corners and black T-mold edge



## Rolling Cabinets with Adjustable Shelves

- Laminate: Formica, Natural Teak



## Soda Pop Serving Station





- Laminate top with vinyl bullnose edge and rounded corners
- Top laminate: Formica Parquet, Latte
- Edge color: Dark Grey
- Laminate exterior
- Interior laminate: Formica Parquet, Latte
- Thermo-fused melamine interior
- Finished on all four sides
- Front has two doors and a lock
- Unit is divided in the center with two adjustable shelves on each side
- Includes grommets in the top for wires of POS station



## Hostess Station



- Laminate top with vinyl bullnose edge and rounded corners
- Top laminate: Formica Parquet, Latte
- Edge color: Dark Grey
- Laminate exterior
- Interior laminate: Formica Parquet, Latte
- Thermo-fused melamine interior
- Finished on all four sides
- Front has two doors and a lock
- Unit is divided in the center with two adjustable shelves on each side
- Includes grommets in the top for wires of POS station



## Hostess Station (Interior)



- Cumaru (Brazilian teak) construction
- Tambour door
- Solid-surface counter
- Three locked areas



## Outdoor POS Station





- Laminate: Wilsonart Fusion Maple
- Drawer with full extension glides
- Wire drawer pull





- Oak
- Stain color: Cherry
- Upholstery: Culp Cantina, Saddle



Host Stand

- Laminate: Wilsonart, Manitoba Maple



Filing Cabinet





# Waste Receptacles



- Laminate: Wilsonart Brighton Walnut
- Polished stainless steel drop hole
- Continuous steel piano hinge
- Wire pull handle
- Heavy-duty magnetic door catch
- Logo permanently routed on the door
- Chrome leveling glides
- Uses a 35 gallon trash liner



Single Waste Receptacle with Top Drop (STF-251) | Etched Logo



- Continuous steel piano hinge
- Heavy duty magnetic door catch
- Permanently routed lettering in white
- Bottom shelf is lined with stainless steel for easy cleaning
- Chrome leveling glides
- Uses a 35 gallon trash liner

Single Waste Receptacle with Flap Front (STF-241)





- ADA compliant
- Laminate: Nevamar Santa Rosa, Plum Tree Textured
- Interior finished with thermo-fused melamine
- Permanently routed lettering in black
- 12" diameter stainless steel drop hole over trash
- Inside bottom galvanized steel pan for easy cleaning
- Continuous steel piano hinge
- Magnetic door catch
- Wire pull handles
- Chrome leveling glides

Single Waste Receptacle with Top Drop (STF-251)





- ADA compliant
- Laminate: Nevamar Santa Rosa, Plum Tree Textured
- Interior finished with thermo-fused melamine
- Permanently routed lettering in black
- 12" diameter stainless steel drop hole over trash
- Inside bottom galvanized steel pan for easy cleaning
- Continuous steel piano hinge
- Magnetic door catch
- Wire pull handles
- Chrome leveling glides

Single Waste Receptacle with Top Drop (STF-251), Inside





- Laminate: Wilsonart Williamsburg Cherry
- 12" diameter polished stainless steel drop holes
- Continuous steel piano hinges
- Wire pull handles
- Heavy-duty magnetic door catches
- Chrome leveling glides
- Bottom shelves lined with stainless steel for easy cleaning
- Uses two 35 gallon trash liners

Double Waste Receptacle with Top Drop (STF-262)







- Laminate: Wilsonart Williamsburg Cherry
- 12" diameter polished stainless steel drop holes
- Continuous steel piano hinges
- Wire pull handles
- Heavy-duty magnetic door catches
- Chrome leveling glides
- Bottom shelves lined with stainless steel for easy cleaning
- Uses two 35 gallon trash liners



Double Waste Receptacle with Top Drop (STF-262), Inside



- Laminate: Wilsonart Williamsburg Cherry
- 12" diameter polished stainless steel drop holes
- Continuous steel piano hinge
- Wire pull handle
- Heavy-duty magnetic door catch
- Chrome leveling glides
- Bottom shelf lined with stainless steel for easy cleaning
- Uses a 35 gallon trash liner

Single Waste Receptacle with Top Drop (STF-261)





- Laminate: Wilsonart Williamsburg Cherry
- 12" diameter polished stainless steel drop holes
- Continuous steel piano hinge
- Wire pull handle
- Heavy-duty magnetic door catch
- Chrome leveling glides
- Bottom shelf lined with stainless steel for easy cleaning
- Uses a 35 gallon trash liner

Single Waste Receptacle with Top Drop (STF-261), Inside



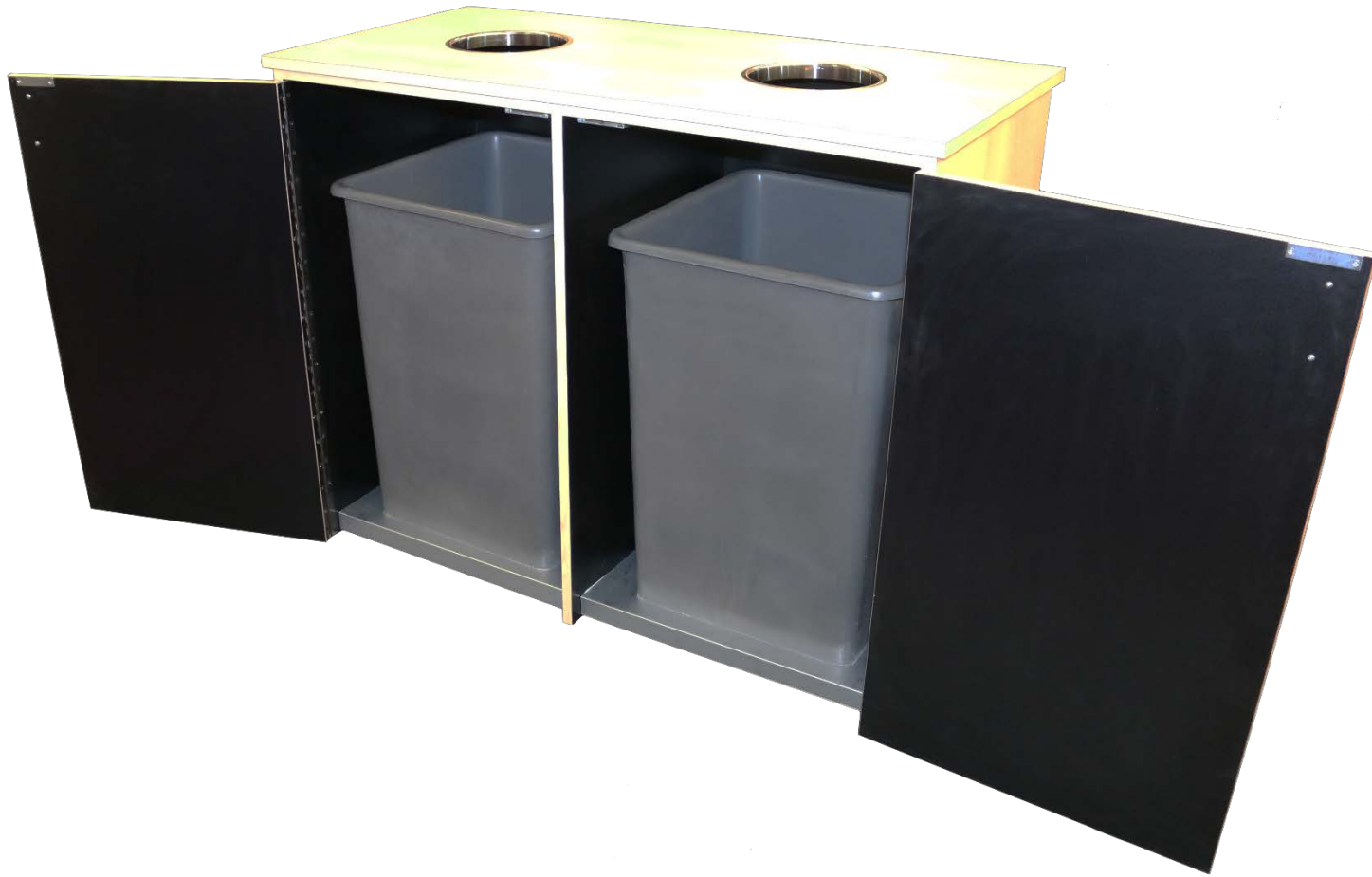




- Laminate: Formica Natural Maple, matte finish
- 8" diameter polished stainless drop hole
- Continuous piano hinge
- Interior finished with thermo-fused black melamine
- Bottom shelf lined with stainless steel for easy cleaning
- Chrome leveling glides

Double Waste Receptacle with Top Drop (STF-262)





- Laminate: Formica Natural Maple, matte finish
- 8" diameter polished stainless drop hole
- Continuous piano hinge
- Interior finished with thermo-fused black melamine
- Bottom shelf lined with stainless steel for easy cleaning
- Chrome leveling glides



Double Waste Receptacle with Top Drop (STF-262), Inside



- High-pressure laminate; Wilsonart Warehouse Oak
- 8" stainless steel drop hole
- Continuous stainless steel piano hinge
- Heavy-duty magnetic catch
- Steel pan in bottom for easy cleaning and sanitation
- Leveling glides
- Holds 35-gallon liner
- Engraved lettering in white



Single Waste Receptacle (STF-251) and Single Recycling Unit (STF-351)





- High-pressure laminate; Wilsonart Warehouse Oak
- 8" stainless steel drop hole
- Continuous stainless steel piano hinge
- Heavy-duty magnetic catch
- Steel pan in bottom for easy cleaning and sanitation
- Leveling glides
- Holds 35-gallon liner
- Engraved lettering in white



Single Waste Receptacle (STF-251) and Single Recycling Unit (STF-351), Inside



- 8" diameter polished stainless steel drop hole in front of door
- Continuous steel piano hinge
- Wire pull handles
- Heavy-duty magnetic door catch
- Permanently routed lettering in black
- Chrome leveling glides
- Uses a 35 gallon trash liner



## Single Waste Receptacle



- 8" diameter polished stainless steel drop hole in front of door
- Continuous steel piano hinge
- Wire pull handles
- Heavy-duty magnetic door catch
- Permanently routed lettering in black
- Chrome leveling glides
- Uses a 35 gallon trash liner



Single Waste Receptacle, Inside



- Self-edge laminate cabinet with enclosed bottom
- White interior
- Magnetic door catch
- Continuous steel piano hinge
- Leveling glides
- Black door lettering



## Waste Receptacles





- Maple construction
- Stain color: Harbor Mist
- Round opening with 8" polished chrome ring
- Adjustable nylon floor glides
- Holds 35-gallon liner



Single Waste Receptacle with Top Drop and Tray Shelf (STF-210)



- Laminate: Wilsonart Wild Cherry
- Interior finished with thermo-fused melamine
- Wire pull handles
- Chrome leveling glides

Double Waste Receptacle with Top Drop (STF-262)



- Laminate: Wilsonart Wild Cherry
- Interior finished with thermo-fused melamine
- Wire pull handles
- Chrome leveling glides



Double Waste Receptacle with Top Drop (STF-262), Inside





- Self edge cabinet with enclosed bottom
- Laminate exterior: Wilsonart Cafelle
- White lettering
- Gray interior
- Magnetic door catch
- Continuous steel piano hinge
- Holds 35-gallon liner
- Metal tray stops



Single Waste Receptacles with Flap Front (STF-231)



- Laminate: Wilsonart Studio Teak, Horizontal Grain



## Quad Waste Receptacle

- Laminate: Wilsonart Studio Teak, Horizontal Grain



Quad Waste Receptacle, Inside





- Laminate: Wilsonart, Shaker Cherry
- Interior finished with thermo-fused melamine color black
- 12" diameter stainless steel drop holes
- Galvanized steel pan for easy cleaning
- Continuous steel piano hinge
- Magnetic door catch
- Wire pull handles
- Chrome leveling glides

Triple Waste Receptacle with Top Drops (STF-263)





- Laminate: Wilsonart, Shaker Cherry
- Interior finished with thermo-fused melamine color black
- 12" diameter stainless steel drop holes
- Galvanized steel pan for easy cleaning
- Continuous steel piano hinge
- Magnetic door catch
- Wire pull handles
- Chrome leveling glides

Triple Waste Receptacle with Top Drops (STF-263), Inside







- Laminate : Wilsonart Lowell Ash
- 8" and 4 3/8" stainless steel drop holes
- Continuous steel piano hinge
- Wire door pulls



## Double Waste Receptacle